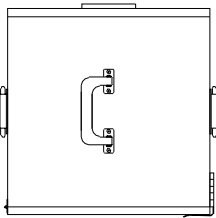
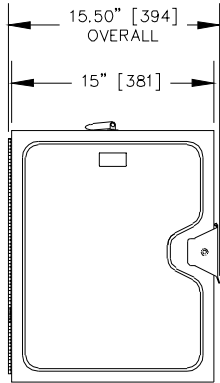


MODEL #4918-700

120V
2.5 AMP
300 WATT
50/60 HZ
FUSE: 250V 3A, GMA 5X20MM



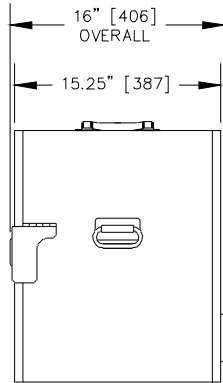
TOP VIEW



FRONT VIEW
DOOR CLOSED

MODEL #4918-800

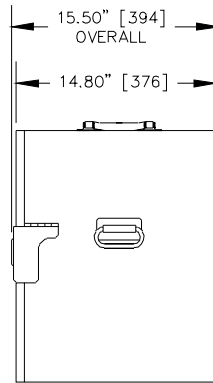
240V
1.25 AMP
300 WATT
50/60 HZ
FUSE: 250V 3A, GMA 5X20MM



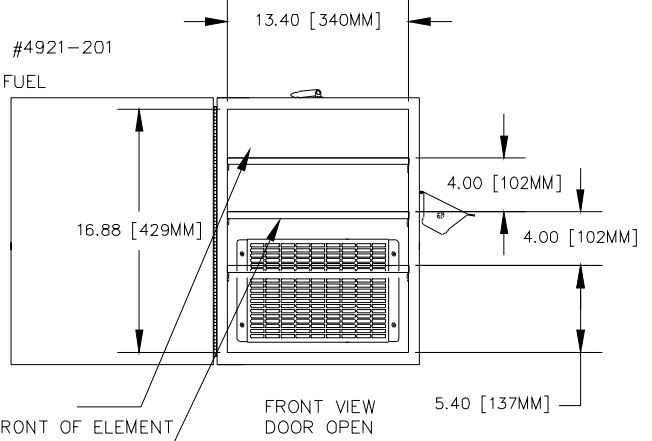
SIDE VIEW
4918 ELECTRIC

MODEL #4921-201

SOLID FUEL



SIDE VIEW
4921 SOLID FUEL

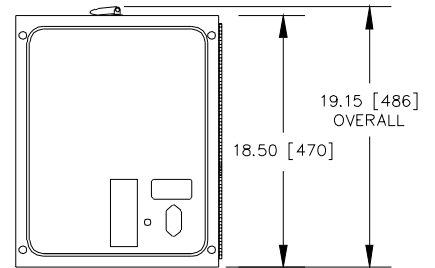


FRONT VIEW
DOOR OPEN

13.25" [337] DEEP
12.25" [311] DEEP IN FRONT OF ELEMENT
ELECTRIC MODELS ONLY
3 REMOVABLE SHELVES .50" THICK

BLACK SOLID FUEL BOXES HAVE A BLACK BODY AND A STAINLESS BACK PANEL.

BLACK ELECTRIC BOXES HAVE A BLACK BODY AND A BLACK BACK PANEL.



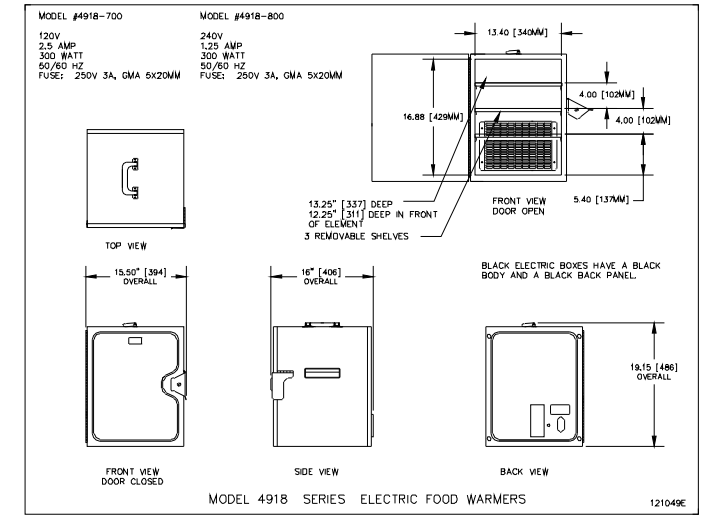
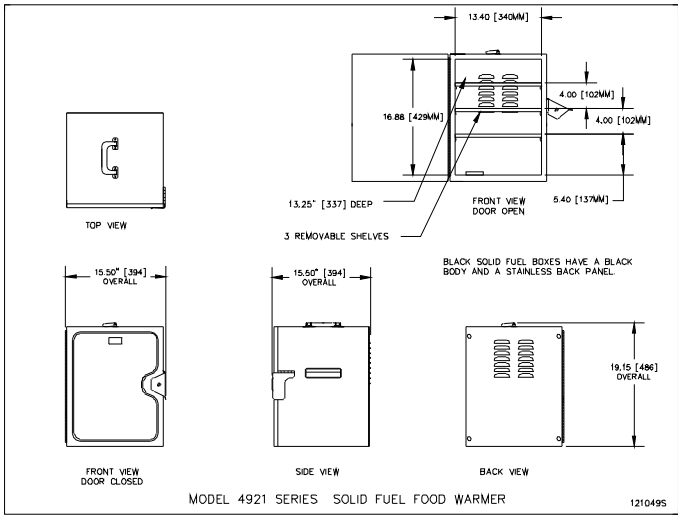
BACK VIEW

13 JAN 09

MODEL 4918 & 4921 SERIES FOOD WARMER

121049

SCALE 1=9



23 APR 09

SCALE 1=9

SOLID FUEL WARMER

23 APR 09

SCALE 1=9