

## BED SPECIFICATIONS

### MATERIAL SPECIFICATIONS:

FRAME: 1.7 mm OR HEAVIER C.R.E.W. STEEL TUBING, ELECTRIC ARC WELDED CONSTRUCTION. BAKED ON ENAMEL FINISH STANDARD, (4) COLORS TO CHOOSE FROM, RUBBER CORNERS.  
 HINGES: 3.0mm THICK STEEL, ELECTRIC ARC WELDED.  
 PADBOARD: VINYL COVERING OVER 12.0mm FOAM ON 12.0mm A-C PLYWOOD  
 HEADBOARD: VINYL COVERING OVER 12.0mm PARTICLE BOARD.  
 BASEPLATE: 19.0mm PAINTED PLYWOOD.  
 SPRINGS: #5160 STEEL.

### CONSTRUCTION SPECIFICATIONS:

THE BED IS IN 6 SIZES THAT ARE CHARTED BELOW.

THE BED IS SHIPPED AS A 558.8mm BED WHICH WILL ALLOW FOR PILLOW STORAGE WHEN BED IS FOLDED INTO RECESS. BED CAN BE CONVERTED BY CUSTOMER TO A 479.0mm DEEP BED IF NARROWER SPACE IS REQUIRED. NO PILLOW STORAGE AT NARROWER SET-UP.

THE BOTTOM OF THE BED FRAME PROVIDES THE WALL CLOSURE. BED IS SHIPPED EITHER WITH NO FACE, 6.0mm PLYWOOD SUB-PANEL, 9.0mm PAINTABLE FACE OR PLASTIC FINISHED FACE. THE SUB-PANEL IS RECESSED AND TO THAT IS ATTACHED THE FINISHED BED FACE (6.0mm MAX. THICKNESS) WHICH IS PROVIDED BY THE CUSTOMER.

THE FRAME IS BOLTED TO THE HINGE ASSEMBLIES, WHICH ARE SECURED TO THE BASEPLATE. THE BOXSPRING IS ATTACHED TO THE BED FRAME AND THE MATTRESS ATTACHES TO THE BOXSPRING. ALL ARE PERMANENTLY POSITIONED. ADJUSTMENT BOLTS ALLOW EASY ALIGNMENT IN RECESS OPENING AND COMPENSATE FOR THE WEIGHT DIFFERENCES IN BED FACES, BOXSPRINGS AND MATTRESSES.

THE BED IS SHIPPED WITH (6) FLOOR ANCHOR AND TOGGLE BOLTS DESIGNED FOR HARD CONCRETE OR WOOD CONSTRUCTION. OTHER FLOORING MAY REQUIRE DIFFERENT FLOOR ANCHORS.

BED IS CARTOONED AND SHIPPED WITH THE BED FRAME, HANDLES, BASEPLATE, PADBOARD, AND HEADBOARD IN ONE CARTON. THE ACCESSORY PACK IS CARTOONED SEPARATELY AND INCLUDES SICO POWER PACKS, HEADBOARD SUPPORTS, FLOOR ANCHORS AND ASSEMBLY INSTRUCTIONS.


NOTE: KING BED IS SHIPPED IN (2) PIECES WITH HARDWARE FOR FIELD ASSEMBLY INCLUDED.

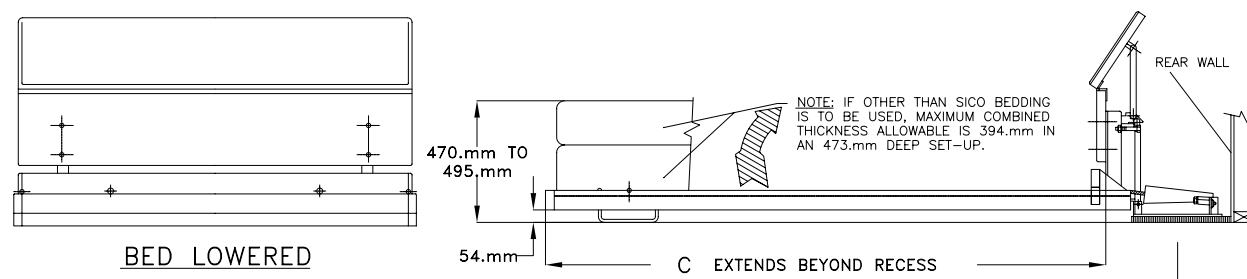
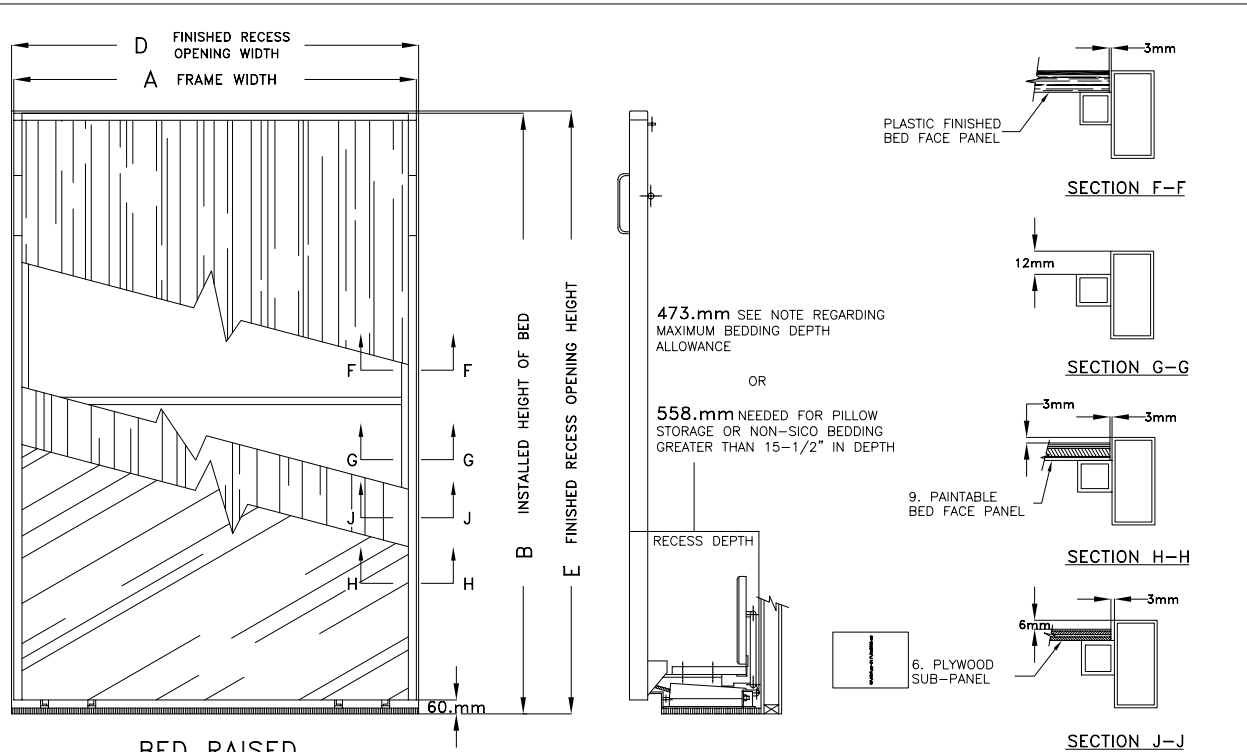
BED SIZE IN mm	A	B	C	D	E
TWIN REGULAR	1029	2111	1975	1041	2121
TWIN EXTRA	1029	2242	2105	1041	2251
DOUBLE REGULAR	1410	2111	1975	1422	2121
DOUBLE EXTRA	1410	2242	2105	1422	2251
QUEEN	1575	2242	2105	1588	2251
KING	1994	2242	2105	2007	2251

NOTE: ALL DIMENSIONS ARE STATED IN mm

REVISED  
 06-12-84  
 04-27-83  
 05-20-85  
 10-18-90  
 06-24-92  
 11-16-92

### ROOM MAKER SERIES BED SPECIFICATIONS

 SICO INCORPORATED 7525 CAHILL ROAD P.O. BOX 1169 MINNEAPOLIS, MN 55440 USA PHONE: 612-941-1700 FAX: 612-941-6737	SCALE
	DRAWN BY JIM K.
COPYRIGHT 19 SICO INCORPORATED	DATE 2-16-81
REVISION DATE	DRAWING NUMBER 71547-M



### WALLBED MODEL NUMBER FORMAT

