



SICO AMERICA INC.  
7525 Cahill Road  
Minneapolis, MN 55439, USA

Customer Service:  
1-800-424-0796  
Website: www.sicoinc.com

# BY TABLE OPERATING INSTRUCTIONS

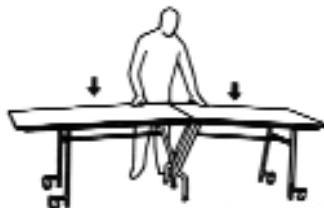
## TO OPEN



1 Release transport lock. Grasp both tops low, force outward.

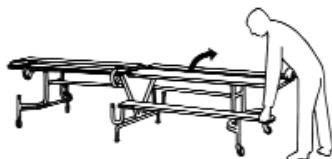


2 As table opens, ease downward.

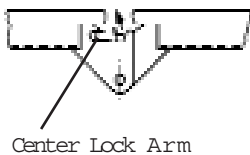


3 Align table in position before legs reach the floor.

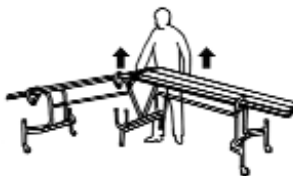
## TO FOLD



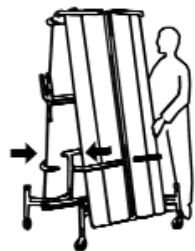
1 Standing at end of table, fold benches onto table top.



2 Raise center lock arm and hold against table top. Grasp top and lift table slightly.



3 Raise table with a continuous upward motion. Lift with your legs.



4 Grasp tops low and push together until lock engages pin.

### When Ordering:

All Parts. Indicate table Serial No., height, length, Serial No. is on frame, near center of table  
Tops. Indicate color, size  
Legs and Center Frames. Indicate table height and leg and center frame finish and color  
For parts or pricing, contact your local dealer or SICO Customer Service.

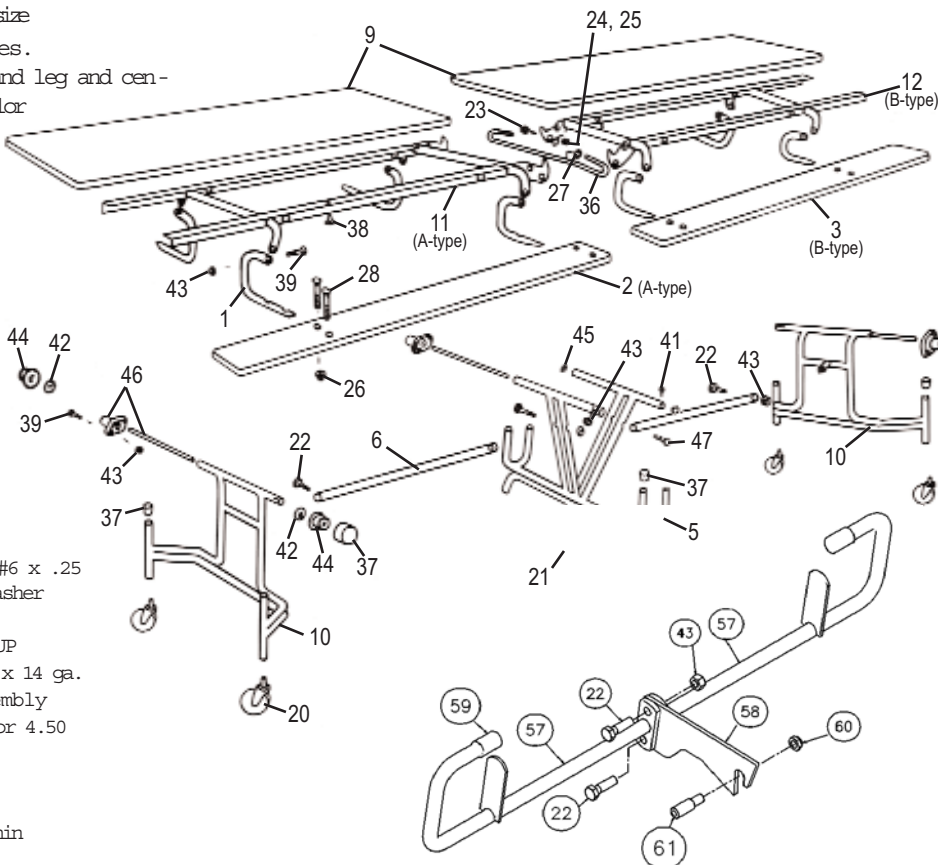
MAINTENANCE: Oil pivot points every six months. Wash tops with soap and water.

### Item Description

- 1 Bench Bracket
- 2 Benchboard
- 3 Benchboard
- 5 Center Frame Assembly
- 6 Tension Bar
- 9 Top
- 10 Outside Leg Weldment
- 11 Top Frame Weldment
- 12 Top Frame Weldment
- 20 Swivel Caster
- 21 Glide Cap, 1 round
- 22 Screw C HH .38-24 x 1.25
- 23 Screw C HH .50 x 13 x 1.00
- 24 Washer Flat .53 x .88
- 25 Nut Stop .50-13
- 26 Nut Acorn .31-18
- 27 Nut Push .50 Washer
- 28 Screw Weld .31-18 x 2.00
- 36 Lock Arm 1/2 dia.
- 37 Glide Cap Round 1
- 38 Rivet Drive .25 x .53
- 39 Screw C HH .38-24 x 1.00

### Item Description

- 41 Screw Dr Round #6 x .25
- 42 Nut Push .38 Washer
- 43 Nut Stop .38-24
- 44 Nut Push .38 CUP
- 45 Plug Round 1.00 x 14 ga.
- 46 Torsion Bar Assembly
- 47 Cap Screw 2.00 or 4.50
- 57 Lock rod
- 58 Hook
- 59 Vinyl cap, 5/8
- 60 Locknut .38-16 thin
- 61 Stop Pin



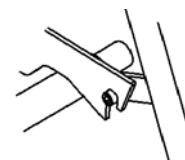
## WARNING

To be moved and operated only by an adult.

Before moving, engage transport lock to prevent tipping.

Failure to follow warnings may result in serious injury or death.

## TO ROLL



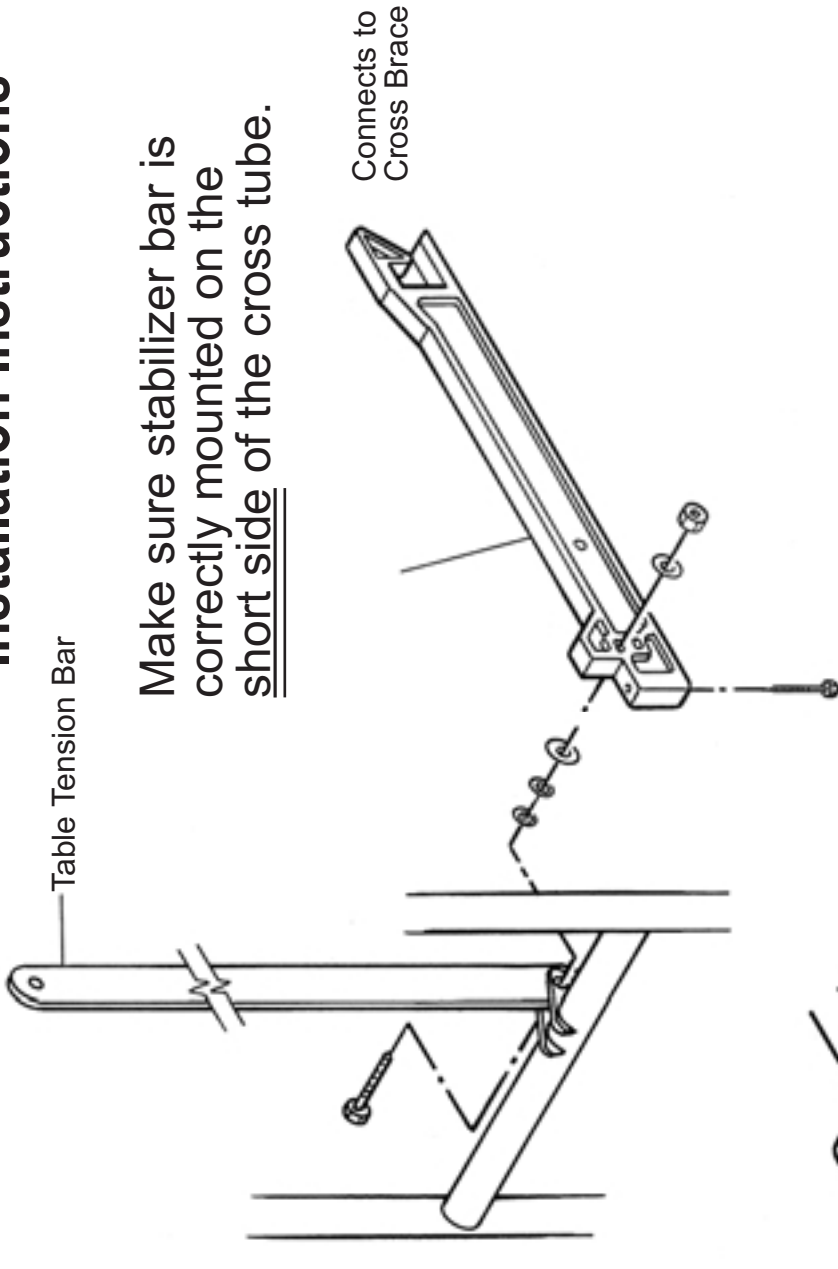
Engage hook before moving.

## WARNING

To avoid table tipping over, push from end of table. DO NOT push from side. Avoid debris on floor.

# Stabilizer Bar

## Installation Instructions



The stabilizer bar has been disconnected for ease of shipping. It must be reattached before the table is used.

1. Remove the nut and washer, and reattach the bar as shown.
2. Tighten the nut. The bar must be free to move up or down, but should not flop from side to side.
3. Fold the table for storage/transport. If the stabilizer bar does not align properly with the cross brace that is opposite the leg, adjust it by turning screw "A" in or out.



**Stabilizer must be installed and engaged before table is moved.**

**Failure to do so could cause table to tip, and serious injury or death could result.**