



SICO AMERICA INC.
7525 Cahill Road
Minneapolis, MN 55439, USA
Customer Service: 1-800-424-0796
Website: www.sicoinc.com

6-SEAT TC-65 GRADUATE TABLE

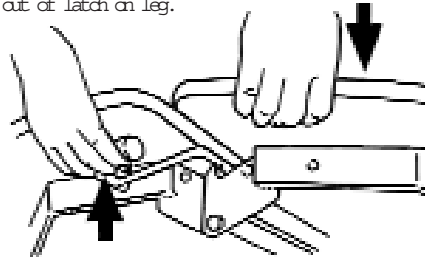
Operating Instructions and Parts List

TO OPEN

⚠ WARNING
Keep fingers away from top edge!



1 Lift stop bar (#28 below) out of latch on leg.



3 Lift center lock arm to release it, then press table top down flat.

2 Lift on side of table top while pressing in at center. As table starts to open, push top down to safety stop position.

⚠ WARNING

Failure to follow warnings may result in serious injury or death.

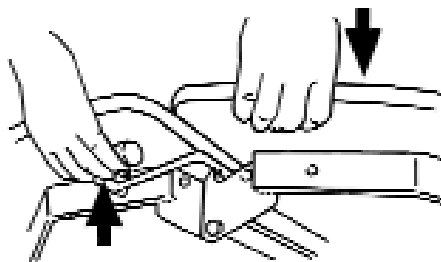
Never let children move table.

Never store where unattended children are present.

To avoid table tipping over, push from end of table. DO NOT push from side.

Avoid debris on floor.

TO FOLD



Lift center lock arm and hold against table top. Raise table with continuous upward motion.

TO ROLL

To gain space for passing through doorway or for storage, raise stop bar (inside the frame).



Push from end of table, not from side.

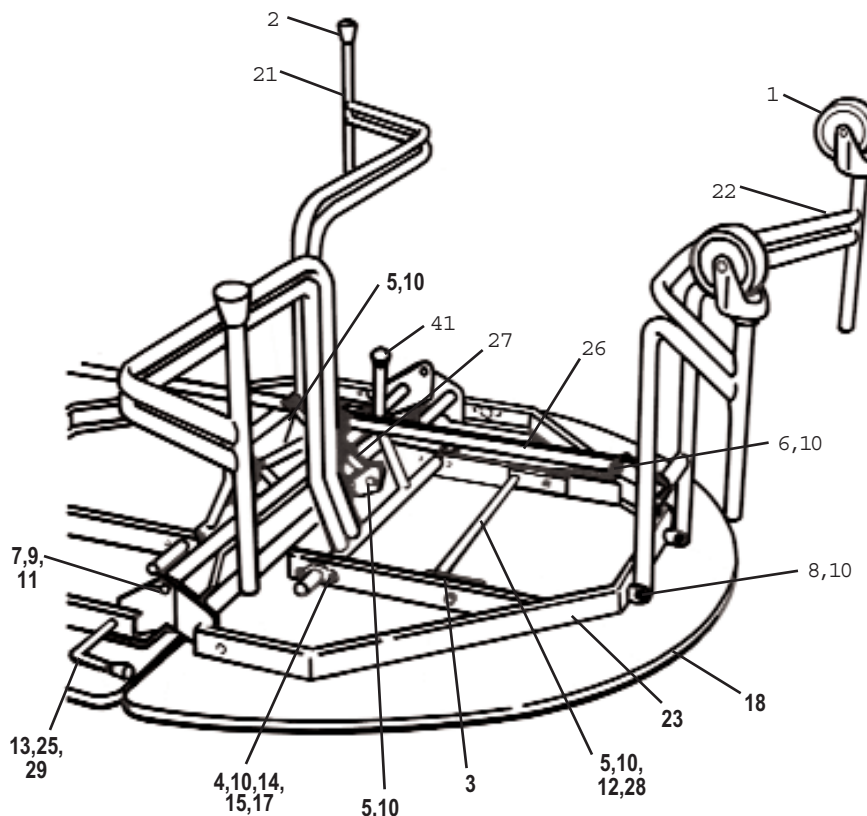


NEVER let children sit or climb on folded table.

MAINTENANCE: Oil pivot points every six months. Wash tops with soap and water.

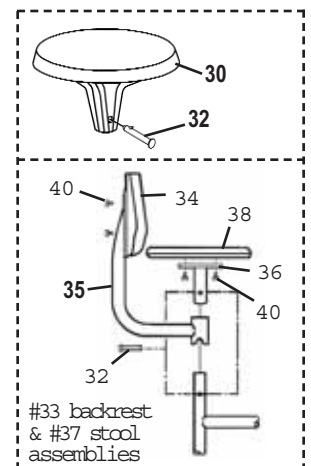
ITEM DESCRIPTION

- 1 Caster, swivel, 4"
- 2 Glide, black, 1" OD
- 3 Rivet, drive, 1/4" x 17/32"
- 4 Cap, Screw, 3/8"-24 x 1"
- 5 Cap, Screw, 3/8"-24 x 1-1/4"
- 6 Cap, Screw, 3/8"-24" x 1-1/2"
- 7 Cap, Screw, 1/2-13 x 1"
- 8 Cap, Screw, 3/8-24 x 2-1/2"
- 9 Washer, 1/2"
- 10 Nut, stop, 3/8-24
- 11 Nut, stop, 1/2-13
- 12 Washer, 3/8"
- 13 Nut, push, 1/2" washer
- 14 Bar, torsion
- 15 Flange, end
- 17 Nut, push, 3/8" washer
- 18 Top (half), 54" x 60"
- 21 Leg weldment, center
- 22 Leg weldment, end
- 23 Weldment, top frame
- 25 Arm, lock
- 26 Bar, tension
- 27 Bar, cross
- 28 Bar, stop
- 29 Cap, 1/2", lock arm
- 30 Stool
- 32 Self-locking Pin
- 33 Backrest Assembly
- 34 Backrest
- 35 Arm, backrest support
- 36 Plate, stool
- 37 Stool Assembly (used with #33 backrest assembly)
- 38 Stool, flat
- 40 Screw, #14 x 5/8"
- 41 Cap, tube



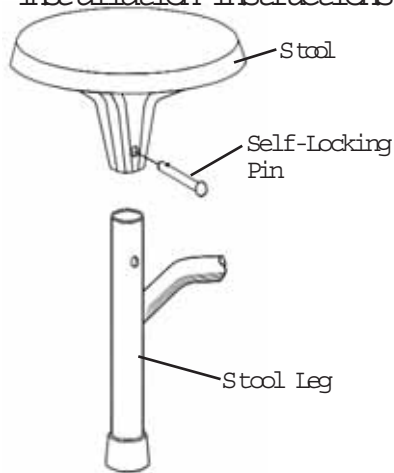
When Ordering:

All Parts. Indicate table Serial No.
Tops. Indicate color, size
Legs. Indicate table height.
For parts or pricing, contact your local dealer or SICO Customer Service.



#33 backrest & #37 stool assemblies

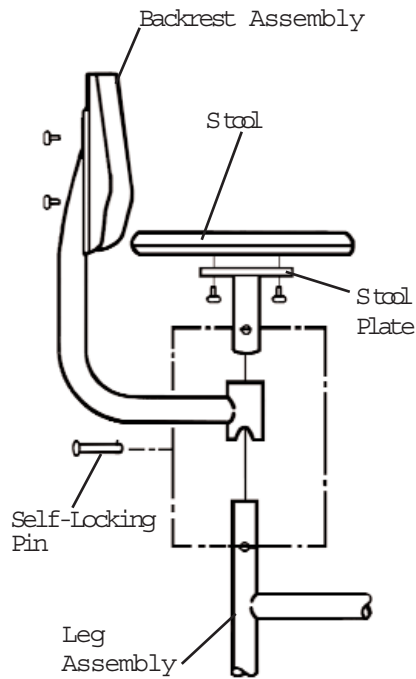
TC-65 Stool Installation Instructions



1. Slide the stool over the top of the stool leg.
2. Align the holes in the stool hub with the holes in the stool leg.
3. Orient the Self-Locking Pin with the detent facing up and slide it through the holes of the stool and stool leg until detent activates. The sides of the pin-heads should fit between the ribs of the stool hub.

CAUTION: Self-Locking pin must be installed to prevent excess wear on stool.

TC-65 Stool and Backrest Installation Instructions



1. Slide the backrest assembly over the stool leg.
2. Insert the stool plate through the backrest and over the leg.
3. Hold up the backrest and align the holes in the stool plate and the leg.
4. Orient the Self-Locking Pin with the detent facing up and slide it through the holes of the stool plate and stool leg until detent activates.
5. Let the backrest slide down and rest on the pin.
6. Rotate the backrest until its notches rest on the pin.

CAUTION: Self-Locking Pin must be installed to prevent excess wear on the stool plate.

To reverse the backrest 180°, grasp the seatback, pull up about 1", then rotate it.