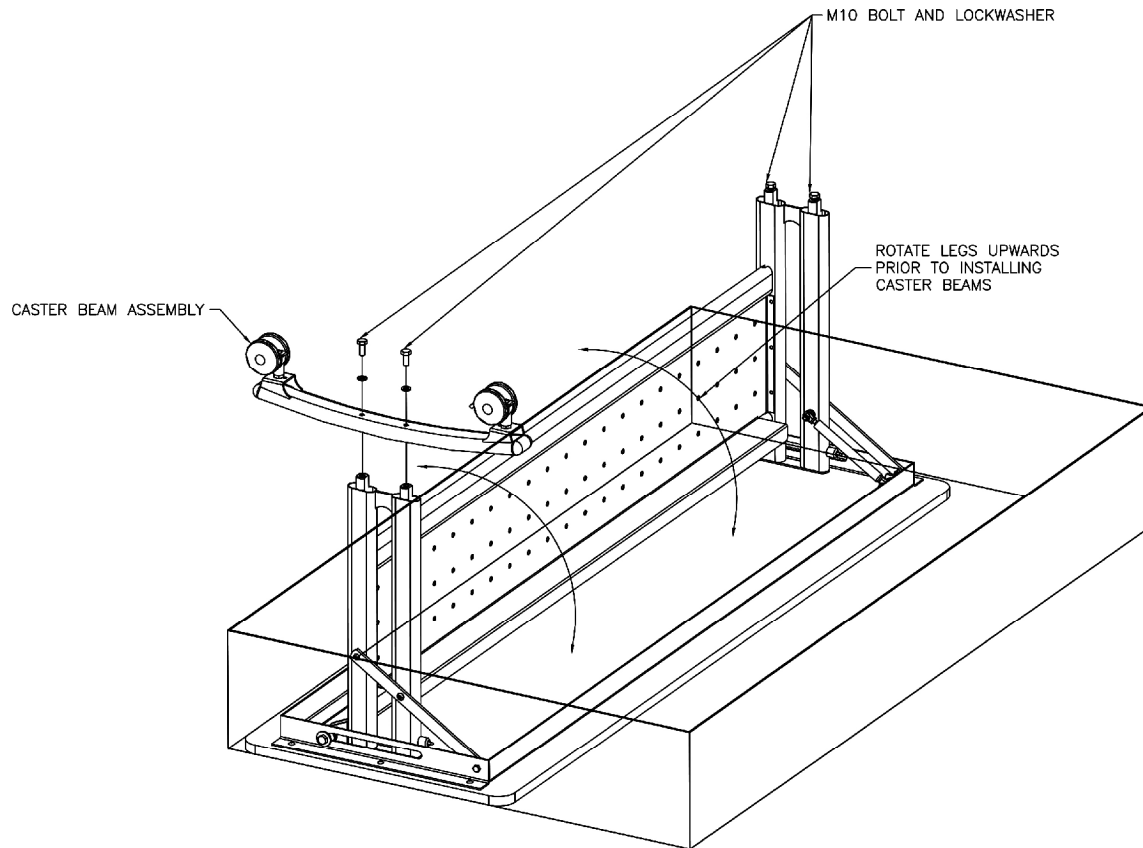




MultiApp Table

TABLE UNPACKAGING AND ASSEMBLY



Unpacking and Assembly Instructions:

1. With carton lying flat as shown on a **level surface**, remove banding and top cover.
2. Remove inner packaging containing caster beams.
3. Rotate base leg structure upward as shown.
4. Remove M10 bolts and lockwashers from leg posts. Do not discard.
5. Install Caster beams using saved hardware. Tighten securely.
6. **Using 2 people**, tip table up and out of carton.

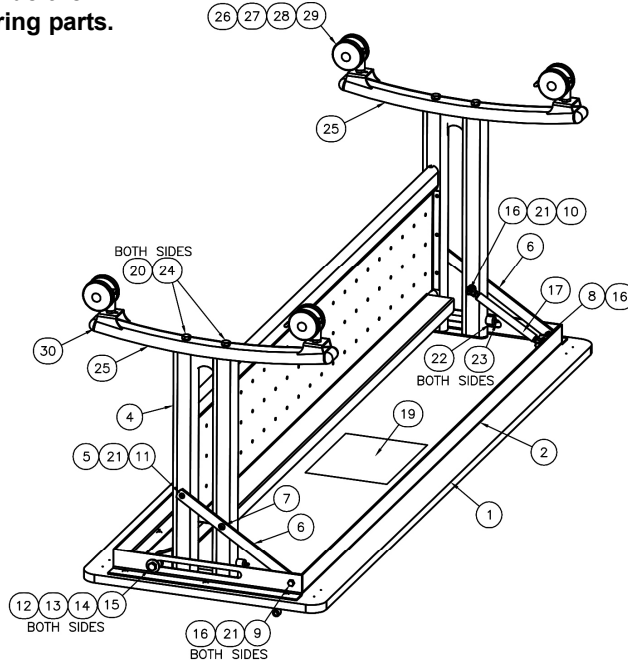
Warning: Note orientation of Caster beams. Installing Caster Beams backwards will result in instability of the table. Make sure the width of Caster beams match the width of the table top. It is highly recommended to use a thread locking compound during this assembly.



MultiApp Table

PARTS LIST

IMPORTANT: Always provide the serial number when ordering parts.



FN	PART NUMBER	DESCRIPTION	QTY
1	109042-XX-XX	TABLE TOP (VARIOUS SIZE/SHAPE)	1
2	270211-XX	TOP FRAME WELDMENT	1
3	000203	RIVET DRIVE BH .25x0.38	14
4	XXXXXX-XXXX	SUB FRAME WELDMENT	1
5	270302	RIVET NUT, SLOTTED M8	2
6	270304	TOP FRAME LEVER	2
7	270305	BHCS, M8 X 18MM	1
8	270154	HHCS M8 X 45MM	1
9	270156	HHCS M8 X 25MM	2
10	270155	BHCS M8 X 55MM	1
11	270229	BHCS M8 X 30MM	2
12	109834	NUT STOP M10x1.5	2
13	112644	FENDER WASHER .405 ID 1.25 OD	10
14	270225	ROLLER BEARING	2
15	109835-070	SCR C HH M10x1.5x70MM	2
16	270153	M8 LOCKNUT	5
17	118184	DAMPER	1
18	112822	SERIAL PLATE (NOT SHOWN)	1
19	270300	LABEL, OPERATING INSTRUCTIONS	1
20	109839	WASHER L SPRING M10	4
21	000299B	WASHER FL .34x.69x.06	13
22	103760	BUMPER, RUBBER	2
23	109829	RIVET BLIND 0.19x0.75	2
24	109835-025	SCR C HH M10x1.5x25 MM	4
25	270217-XX	CASTER BEAM ASSEMBLY (ALL COMPONENTS)	2
26	115212	LOCKNUT M14	4
27	117480	CASTER BODY 3" NON-LOCK	2
28	117481	CASTER BODY 3" LOCKING	2
29	117482	STEM M14 FOR 3" CASTER	4
30	118601-01	TUBE CAP	4

SICO America Inc. reserves the right to substitute materials or make changes if materials are not available or such changes improve the product.