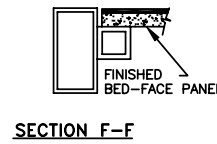
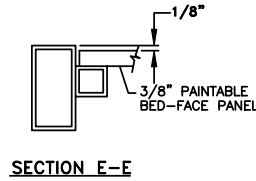
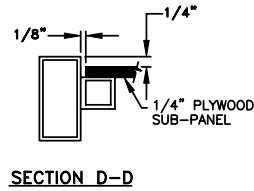
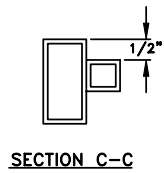


BED SPECIFICATIONS

71582

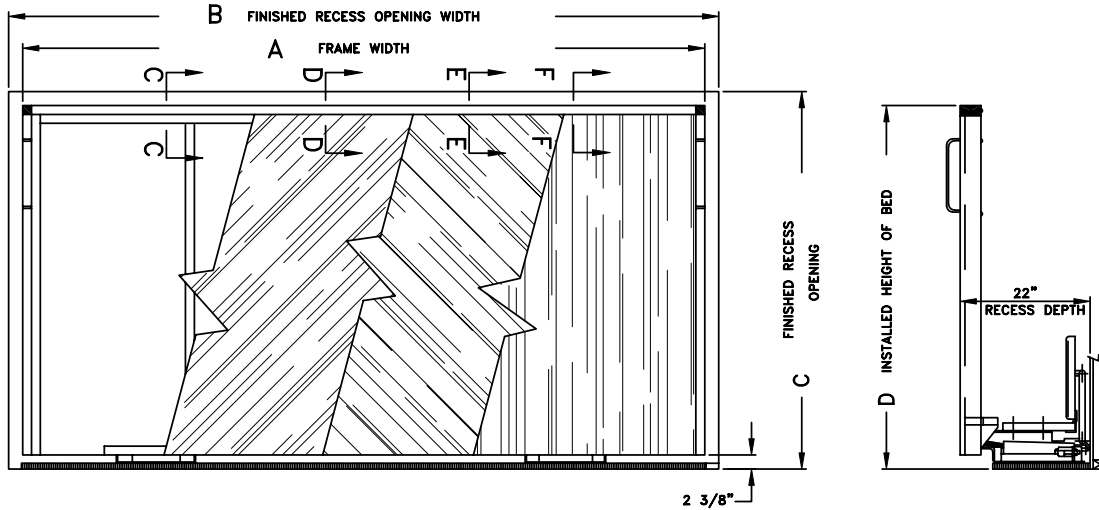


MATERIAL SPECIFICATIONS:

FRAME: 16-GAUGE OR HEAVIER C.R.E.W. STEEL TUBING, ELECTRIC ARC WELDED CONSTRUCTION. BAKED ON ENAMEL FINISH STANDARD, (4) COLORS TO CHOOSE FROM, RUBBER CORNERS.
 HINGES: 3/16" THICK STEEL, ELECTRIC ARC WELDED.
 PADBOARD: VINYL COVERING OVER 1/2" FOAM ON 1/2" A-C PLYWOOD
 HEADBOARD: VINYL COVERING OVER 3/4" PARTICLE BOARD.
 BASEPLATE: 3/4" PAINTED PLYWOOD.
 SPRINGS: #5160 STEEL.

CONSTRUCTION SPECIFICATIONS:

THE BED IS AVAILABLE IN FIVE SIZES THAT ARE CHARTED IN THE MIDDLE OF THE DRAWING.
 THIS BED IS DESIGNED FOR INSTALLATION IN 22" OR DEEPER RECESS ONLY.
 THE BOTTOM OF THE BED FRAME PROVIDES THE WALL CLOSURE. BED IS SHIPPED EITHER WITH NO FACE, 1/4" PLYWOOD SUB-PANEL, 3/8" PAINTABLE FACE PANEL OR WITH 3/8" FINISHED FACE PANEL. THE SUB-PANEL IS RECESSED AND TO THAT MAY BE ATTACHED A FINISHED FACE PANEL (1/4" MAXIMUM THICKNESS) PROVIDED BY THE CUSTOMER.
 THE FRAME IS BOLTED TO THE HINGE ASSEMBLIES, WHICH ARE SECURED TO THE BASEPLATE. THE BOX SPRING IS ATTACHED TO THE BED FRAME AND THE MATTRESS ATTACHES TO THE BOXSPRING. ALL ARE PERMANENTLY POSITIONED. ADJUSTMENT BOLTS ALLOW EASY ALIGNMENT IN THE RECESS OPENING AND COMPENSATE FOR THE WEIGHT DIFFERENCES IN BED FACES, BOX SPRINGS AND MATTRESSES.
 THE BED IS SHIPPED WITH (6) FLOOR ANCHOR AND TOGGLE BOLTS DESIGNED FOR HARD CONCRETE OR WOOD CONSTRUCTION. OTHER FLOORING WILL REQUIRE DIFFERENT FLOOR ANCHORS.
 BED IS CARTOONED AND SHIPPED WITH THE BED FRAME, HANDLES, BASEPLATE, PADBOARD AND HEADBOARD IN ONE CARTON. THE ACCESSORY PACK IS CARTOONED SEPARATELY AND INCLUDES SICO POWER PACKS, HEADBOARD SUPPORTS, FLOOR ANCHORS AND ASSEMBLY INSTRUCTIONS.



BED RAISED

BED SIZE	A	B	C	D	E
TWIN REGULAR	76-1/2"	77"	49"	47-1/8"	41-3/4"
TWIN EXTRA	82-1/2"	83"	49"	47-1/8"	41-3/4"
DOUBLE REGULAR	76-1/2"	77"	64"	62-1/8"	56-3/4"
DOUBLE EXTRA	82-1/2"	83"	64"	62-1/8"	56-3/4"
QUEEN	82-1/2"	83"	70-1/2"	68-5/8"	63-1/4"

THE FOLLOWING STANDARD BED FACE OPTIONS ARE AVAILABLE:

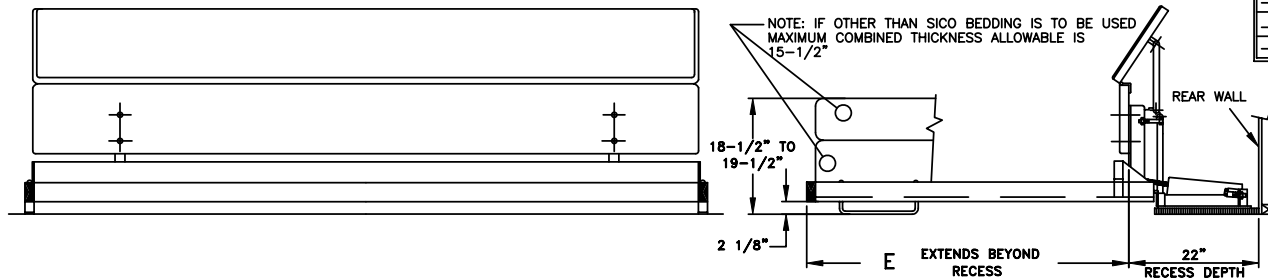
MODEL NO.	BED FACE
1926-	NO FACE PANEL
1927-	1/4" PLYWOOD SUB-PANEL
1929-	3/8" PAINTABLE PANEL
1930-	FINISHED FACE (SEE NOTE 1)

THE FOLLOWING STANDARD BED FRAME FINISHES ARE AVAILABLE:


SUFFIX NO.	BED FRAME/VINYL FINISH
-001 THRU -005	STANDARD COLOR FRAME(SEE NOTE 2)
-101 THRU -105	CHROME TRIM
-201 THRU -205	BRASS TRIM
-301 THRU -305	SPECIAL COLOR FRAME
-401 THRU -405	SPECIAL COLOR VINYL
-501 THRU -505	SPECIAL COLOR FRAME AND VINYL
-601 THRU -605	SPECIAL COLOR VINYL WITH CHROME TRIM
-701 THRU -705	SPECIAL COLOR VINYL WITH BRASS TRIM

NOTES:

- 1) FINISHED FACES COME IN (4) STANDARD COLORS:- 18 ALMOND -22 ATLANTIC OAK, -32 BLACK, -33 WHITE
- 2) BED FRAMES COME IN (4) STANDARD COLORS: ALMOND, MOCHA BROWN, BLACK, WHITE.



BED LOWERED

1900 SERIES SIDE-FOLD BED SPEC. DRAWING		
TOLERANCES	DATE 10-27-81	DRAWN BY JIM K.
SCALE	REVISED 10-28-81	APPROVED BY
 7525 CAHILL ROAD EDINA, MINNESOTA 55435		
NEXT ASSY	NO REQ.	DRAWING NO. 71582