

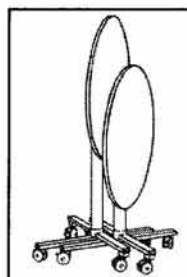
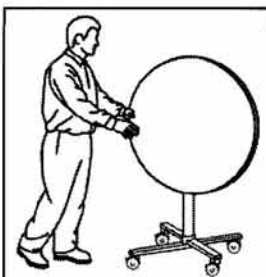
SOCIALIZER® TABLE Operating Instructions

**READ INSTRUCTIONS
BEFORE OPERATING**
*LEA LAS INSTRUCCIONES
ANTES DE USAR*

TO MOVE PARA MOVER

Make sure the wheels are not locked before moving the table.
ALWAYS push from the end of the table.

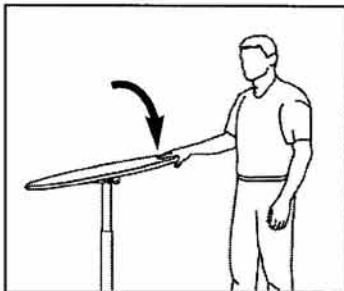
Antes de mover la mesa asegúrese de que las ruedas no estén trabadas. SIEMPRE empuje tomándola por el borde.



Nested tables in the storage position.

Mesas encajadas en la posición de almacenamiento.

TO FOLD TOP DOWN: PARA BAJAR LA TAPA:



Grasp the table top and carefully rotate down until it is locked in place.

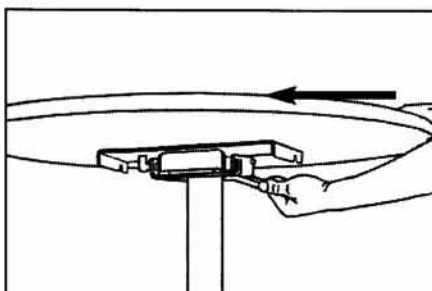
Tome la tapa de la mesa y hágala girar hacia abajo hasta que encaje en su lugar.

TO FOLD TOP UP: PARA SUBIR LA TAPA:



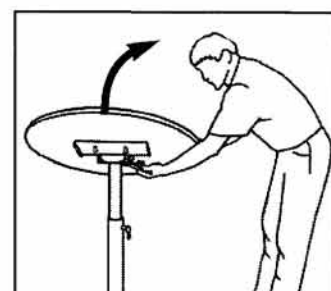
1 Grasp the table top and the handle under the table.

Tome la tapa de la mesa y la palanca que está bajo la mesa.



2 Firmly hold the handle while pushing the table top away from you.

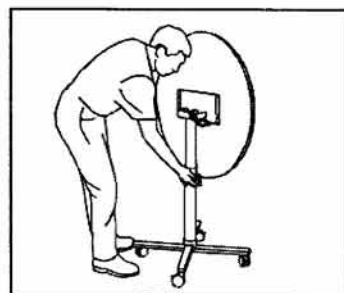
Sujete la palanca a la vez que empuja la tapa alejándola de usted.



3 Tilt the table top up to the storage position.

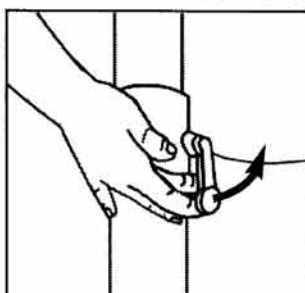
Incline la tapa de la mesa hasta que quede en la posición de almacenamiento.

TO LOWER TOP FRAME: For Dual Height Models PARA DISMINUIR LA ALTURA: En Modelos de dos Alturas



1 Locate the column lock at the center of the column.

Encuentre la traba de la columna en el centro de la columna.



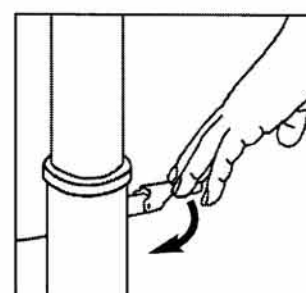
2 Flip the lock handle up.

Haga girar la palanca de trabado hacia arriba.



3 Push table top down to the desired height.

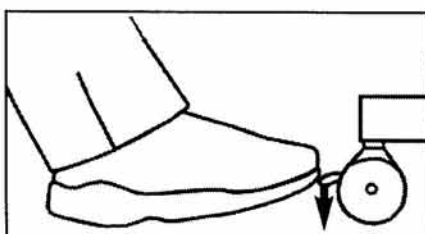
Empuje la tapa de la mesa hacia abajo, a la altura deseada.



4 Flip the lock handle down to activate the lock.

Gire la palanca de trabado hacia abajo para fijar la traba.

TO LOCK CASTERS: INMOVILIZACIÓN DE LAS RUEDAS:



Step down on the tab at the front of the wheel.

Pise la lengüeta en frente de las ruedas.

SICO SICO AMERICA INC.
1-800-424-0796
WWW.SICO.COM
PART NO. 117476 Rev. B REV. DATE 11/02

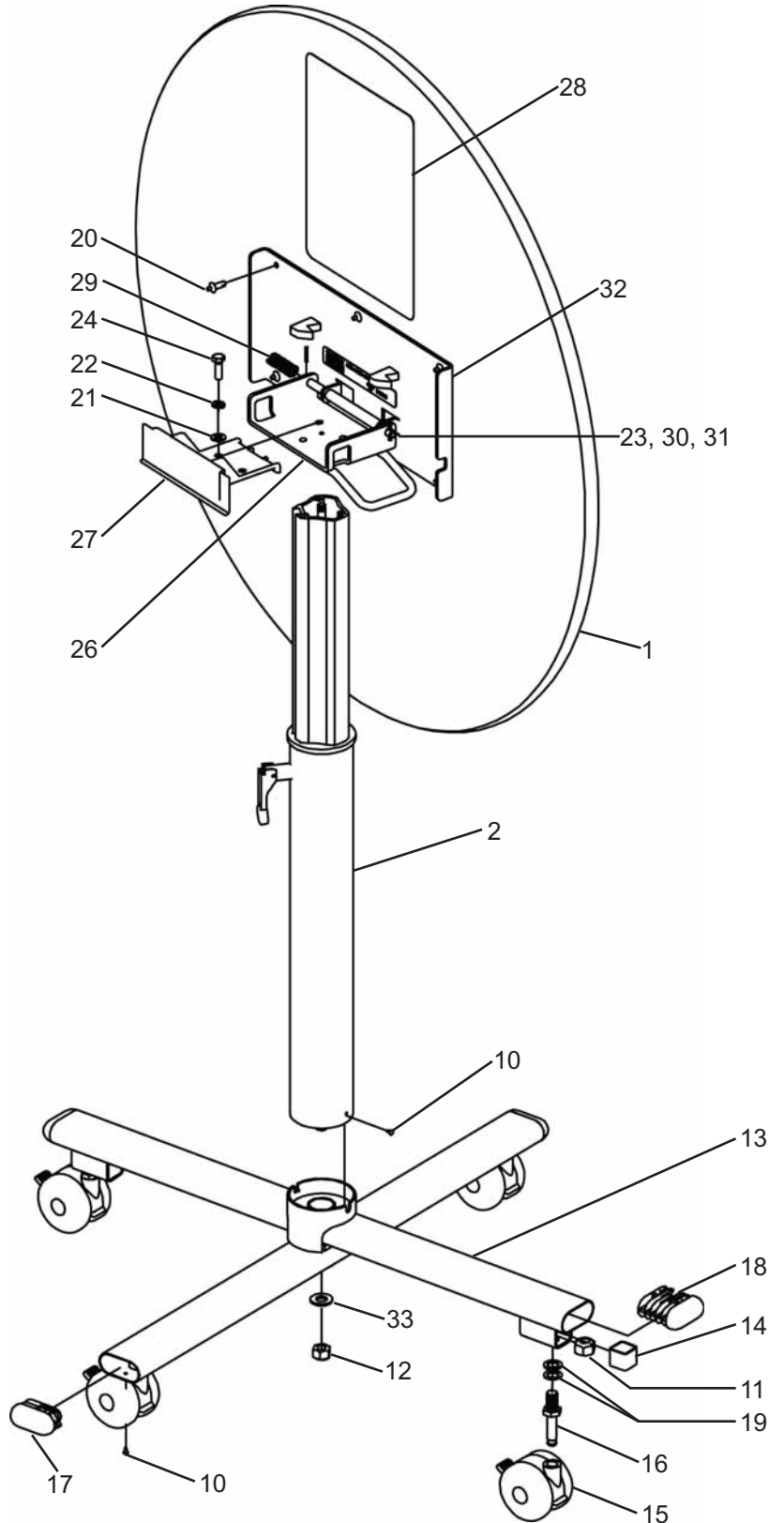


SICO AMERICA INC. ®
 7525 Cahill Road
 Minneapolis, MN 55439, USA
 Customer Care: 1-800-424-0796
 Website: www.sicoinc.com

**SICO SOCIALIZER® TABLE
 Part List**

When Ordering Replacement Parts:
 All Parts - indicate table Serial Number
 (located under the top, near center of table:
 it is a seven-digit number)

1	Drilled top round	109042-89
2	Adjustable Height column	117466
	Fixed Height column 27"	117468
	Fixed Height column 41"	117467
10	Drive screw RH#6 x 0.25	000270
11	Nut, locking M14 x 2.0	115212
12	Nut, stop .50-13	100678
13	Caster beam weldment	120124B
14	Tube Insert	117479B
15	Caster body 3" locking	117481
16	Caster stem M14-2 x .88	117482
17	Tube cap, oval	120491
18	Tube cap, oval	118601-01
19	Washer .88 x .53	294
20	Drive rivet .25 x .66	000213
21	Flat washer .34 x .69 x .06	000299B
22	Spring washer .31	000477
23	Spring pin .13 x .75	100978
24	Screw, hex .31-18 x 1.00	104614B
25	Serial plate	112822
26	Channel weldment	117470B
27	Slide mount	117475
28	Instruction label	117476
29	Spring Compression	117484
30	Spacer tube	117489B
31	Pivot rod	117490Z
32	Top plate weldment	117491B
33	Washer .53 x 1.06 x .09	117454



Sico reserves the right to substitute materials or make changes if materials are not available and/or such change improve the product.