

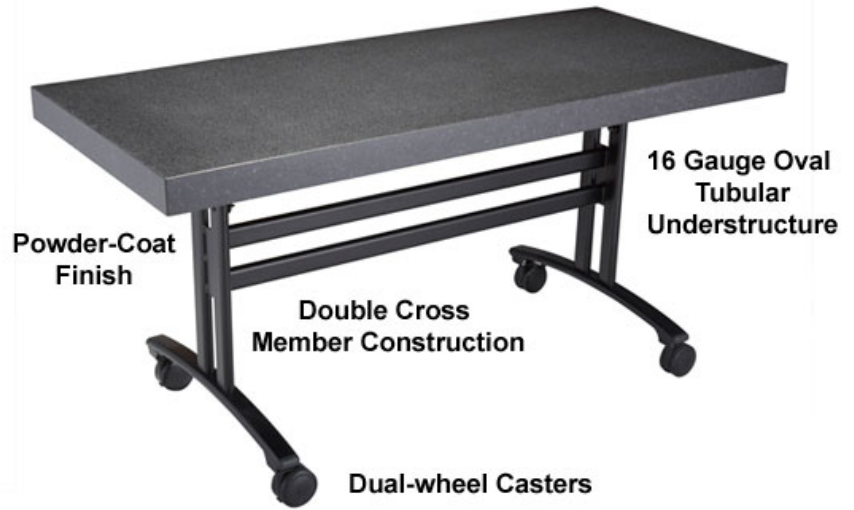
# SICO<sup>®</sup> Sophisticate Table

Style, mobility, and durability in one upscale table.



Tabletop Folds/Nests for Storage

NSF Certified Natural Stone Composite Tabletop Surface



Powder-Coat Finish

Double Cross Member Construction

Dual-wheel Casters

16 Gauge Oval Tubular Understructure

## Features, Advantages & Benefits

**Table Top Personalization** – Choose from 4 unique table top designs.

### 1. NSF Certified Natural Stone Composite Top

- Completely sealed top surface is durable and easy-to-clean.
- Superior scratch and stain resistant. Cut directly on the table surface.
- Set hot items up to 500° directly on the NSF certified surface material without scalding.
- Exquisite top color choices. An elegant and refined high-end table.
- Durable .25" (.6cm) natural stone composite top made of 95% natural stone and 5% Polymer formed over .75" (2cm) MDF.

### 2. High-pressure Laminate Top

- Table top core is completely sealed to a tough laminated surface for long-term durability.
- Hermetically seals the tabletop for sanitary purposes and prevents moisture from entering table top core.
- A large variety of striking colors and patterns are available to fit any color scheme.

### 3. High-pressure Laminate Top with Wood Trim

- Same great features as laminate top with the added beauty of wood trim accents.

### 4. High-pressure Laminate Top with Armor-Edge<sup>®</sup>

- Same great features as laminate top with the strength and durability of the most durable edge available providing an incredibly tough edge to take hard everyday abuse without damage.

**Folding Table Top** - Top folds & nests for efficient storage using up less facility space when not in use. Tabletop remains in the use position until over-center lock is released for folding into storage configuration.

**Table Frame** – Strong 16 gauge tubular frame support provides durability and strength to table.

- **Oval Tubular Understructure** – Adds style and strength to the table.
- **Double Cross Member Construction** - Adds twice the strength & longevity.

**Powder-coat Finish** - Durable understructure with choice of elegant baked-on surface powder-coat colors.

**Pneumatic Dampers** - Makes folding the tabletop quick and easy.

**Mobile Dual-wheel Casters** - Easily roll table into and out of service for any function. Non-marring, 4" (10cm) caster wheels protect floors.

**Free Space Analysis** - Take advantage of the free space analysis drawings which will provide you with the appropriate number of tables and table accessories.

**Warranty** – Protected by a **3-Year Warranty** against manufacturer's defects. **Lifetime Warranty** on welds.

## Specifications

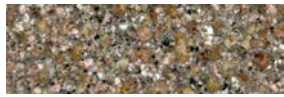
Model No.	Description	Table Top	Table Height	Weight
TBW11NPG????B	Laminate Top with Wood Edge	32" (82cm) W x 72" (183cm) L	36" (91cm) or 32" (82cm).	183 lbs. (83kg)
TBM11NPG??02B	Laminate Top with Armor-Edge	32" (82cm) W x 72" (183cm) L	36" (91cm) or 32" (82cm).	173 lbs. (79kg)
TBL11NPG????B	All-Laminate Top	32" (82cm) W x 72" (183cm) L	36" (91cm) or 32" (82cm).	173 lbs. (79kg)
TBG11NPG??00B	Natural Stone Composite Top	32" (82cm) W x 72" (183cm) L.	36" (91cm) or 32" (82cm).	245 lbs. (111kg)
TBJ11NPG??02B	Natural Stone Composite Top with SICO® Armor-Edge®	32" (82cm) W x 72" (183cm) L.	36" (91cm) or 32" (82cm).	245 lbs. (111kg)

\* Custom laminate colors available. Custom Natural Stone Composite choices available.

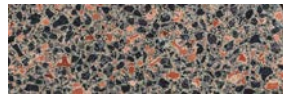
### Natural Stone Composite Table Top Options



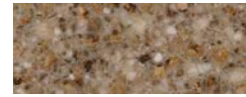
Nero Galaxy (60)



Karra Oro (62)



St. Leo's Copper (68)



Bianco Modena (67)

### Laminate Table Top Options



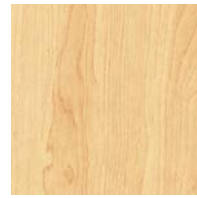
Wild Cherry (49)



Bannister Oak (10)



Nepal Teak (74)



Kensington Maple (77)



Gray Nebula (38)



Graphite Nebula (50)



Windswept (51)



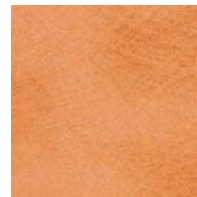
Saffron Tigris (54)



Navy Legacy (53)



Green Tigris (76)



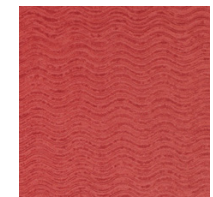
Karratha Brush (70)



Maroochy Brush (71)



Woolamai Brush (72)



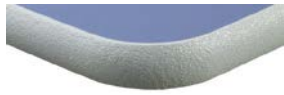
Pomegranate (78)

\* Check with a SICO Representative for additional laminate choices available.

### Armor-Edge Table Top Edge Options



Black (02)



Gray (03)



Burgundy (04)



Blue (05)



Brown (06)

### Wood Trim Table Top Edge Options



Burgundy Walnut

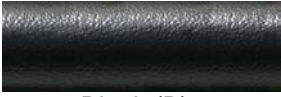


Cape Cod



Natural

## Table Leg & Frame Options



Black (B)



Copper Vein (R)



Silver Vein (L)

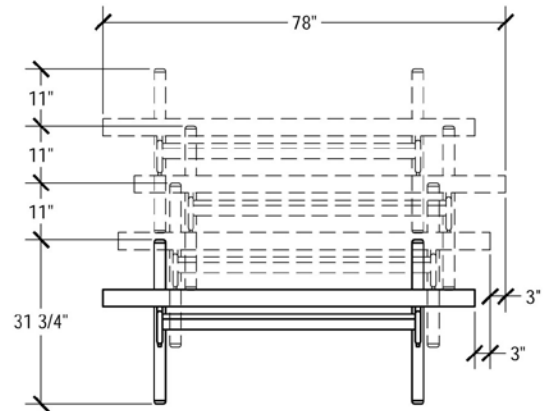
# SICO<sup>®</sup> Sophisticate Table Dimensions

## Dimensions

Top Height: 36" Folded Height: 47" Table Top Size: 32x72"



Table Dimensions



Storage Configuration



For More Information Visit: <http://www.sicoinc.com/sophisticate.php>

7525 Cahill Road, Minneapolis MN 55439

1.800.533.7426