

Flip-Tech Meeting & Workspace Tables



Designed to Fit.
Built to Last.



*Rectangle- Medium: Stone Grey (0112) Top
Stone Grey (0112) Edge
Black Frame
Straight Leg Style*

SICO[®] QUALITY

Designed in the UK, Flip-Tech Meeting & Workspace Tables offer a flexible solution for any meeting or workspace environment. Customizable in a variety of shapes, sizes, and finishes, tables can be linked together to create unique configurations and store in minimal space. Flip-Tech Tables provide a stylish and versatile solution for any environment.



Easy Release Mechanism

Table tops are perfectly balanced and the 'flipping action' is controlled by the easy release locking bar.



Customizable

Choose from an extensive range of shapes, sizes, laminates, edging, leg style, modesty panels, linkages and power accessories.



Nesting Storage

When storage is at a premium the Flip-Tech Table is sure to fit your needs. Flip and roll tables together to save storage space.

Flip-Tech Table Features

Multiple Top Options

Durable Edge

Linking Capability

Three Standard Top Shapes

Multiple Finish Options

Tubular Steel Leg and Frame

Power/USB Port & Cord Storage

Two Standard Leg Styles

Swivel Casters

Modesty Panel Option



Table Top

MFC Table Top: Seamless 1" (2.5cm) Melamine Faced Chipboard with flat edges. Fastened to frame by self-tapping screws for ease of maintenance and serviceability.

Laminate Top: Standard melamine top options to choose from. The laminate is applied to the top and bottom of the table, offering stylish durability for long term use.

Edge Banding: Tough ABS edge banding for added durability and long-term wear. Choose from options to complement the table top.

A Variety of Sizes: Choose from a variety of shapes and sizes including rectangle, trapezoid, and semicircle. Connect and configure different shapes into the ideal layout for your event.

Accessories

Power and Charging Sockets: Multiple style and usage options suitable for all major markets. Power and USB sockets standard when purchasing.

Cable Management: Required when incorporating power sockets, horizontal tray and vertical section to guide route cables neatly to the floor. PPC finish to match frame color.



FEATURES & BENEFITS

Transport & Storage

Standard 2.5" (6.5cm) Casters:

Functional transport is important. All tables have grey plastic swivel caster with thermoplastic rubber for smooth rolling. Two of the four casters are locking.

Nesting Storage: Nest tables into one another to save storage space and create functional styling.

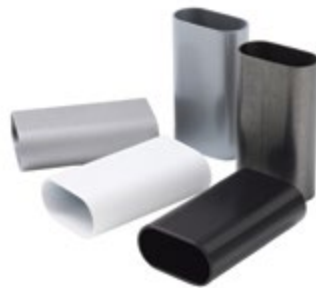
Frame

14 Gauge (2mm) Mild Steel & Tubular Sections: Each frame is constructed from steel tubing for superior strength and longevity.

Finishes & Colors: Choose from five standard polyester powder coat (PPC) with multiple finishes to accent your table.

Two Leg Styles: Choose from either straight or curved leg styles to match your ideal vision.

Modesty Panel: PPC finished to match the frame. Folds and stores with the frame with no additional footprint.



Configurations

Use your creativity to set up these tables in a way to best suit your event needs. Common configurations include:

- Meeting
- Seminar
- Conference
- Display
- Classroom

Linking: Tables can be linked together by the steel linking strap system, to ensure table tops are level when linking in a conference style layout.



Warranty

Protected by a 1-year warranty against manufacturer's defects. Does not include casters. Visit www.sicoinc.com for warranty details.

Serial Number: Tables are permanently marked for easy identification.

Space Design

Take advantage of our FREE space design service to determine the optimal layout and number of products for your space.

OPTIONS

Choose Top Shape

Choose from 3 shapes that can elevate the functionality and flexibility of your space. Combine shapes into unique layouts that suit your specific needs.

Choose Size

Choose from multiple sizes that will fit your space while in use and also while in storage. Multiple shapes and sizes also nest together for transport and storage.

Choose Top Laminate

Choose from standard melamine top options for a custom look. Visit www.sicoinc.com for a complete list of standard options that are sure to complement your space.

Choose Edge Color

ABS plastic edge can match or contrast the top laminate. Customize the look of your space and choose colors to match or accent the table top decor. Standard edge color will match the top laminate.

Choose Leg Style

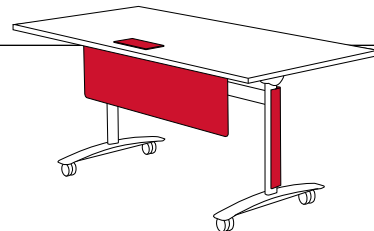
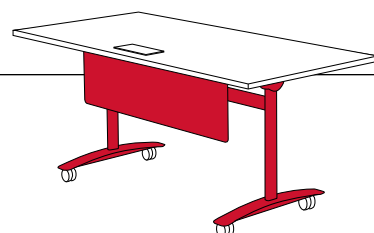
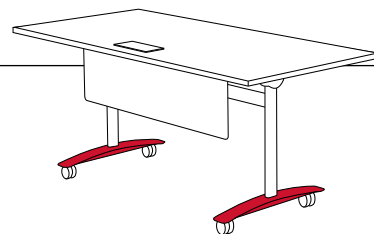
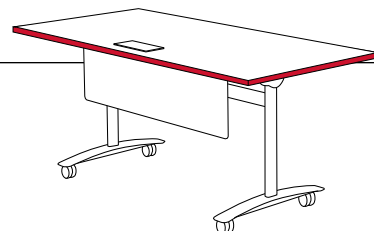
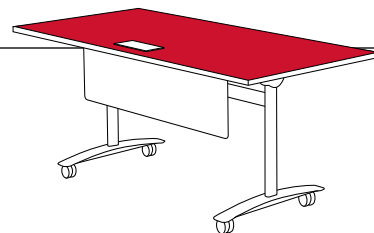
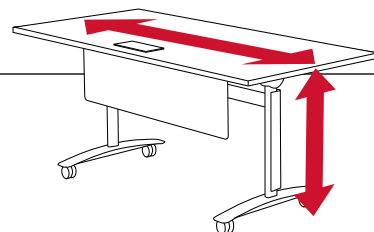
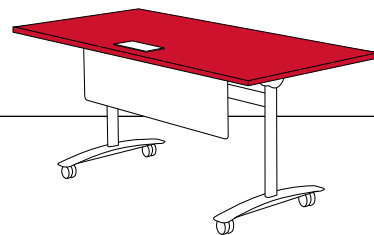
Choose from two leg styles that change the look of the table. Both styles have the same dimensions and caster.

Choose Frame Color

Choose from five standard frame and modesty panel color options. All colors are highly durable polyester powder coat.

Choose Accessories

Add any accessory to any table shape or size. These accessories do not affect the overall dimensions or storage footprint.



THINK BIG!

Top Shape

Rectangle

Half Round

Trapezoid

Table Size

Length & Width

Top Laminate

Visit www.sicoinc.com to see a full list of available top laminates.

Edge Color

Visit www.sicoinc.com to see a full list of available top laminates.

Leg Style

Straight

Curved

Frame Color

Black (RAL9017)

White (RAL9016)

Silver (RAL9006)

Metallic Silver
(RAL9007)

Clear*
(MZ800D)

Accessories

Power & USB Ports

Cable Management

Modesty Panel

* Available on Straight Leg Style Only
Colors are Representative Only

SPECIFICATIONS

Ordering Information

Model No.	Description	Top Size (L x W)	Weight	Height
FTT1?-12R?-???-?-?-?	Rectangle- Small	23.6" x 47.25" (60cm x 120cm)	73 lbs./33kg	28" (72cm)
FTT1?-16R?-???-?-?-?	Rectangle- Medium	31.5" x 63" (80cm x 160cm)	77 lbs./35kg	
FTT1?-18R?-???-?-?-?	Rectangle- Large	35.5" x 71" (90cm x 180cm)	88 lbs./40kg	
FTT1?-12T?-???-?-?-?	Trapezoid- Small	23.6" x 47.25" (60cm x 120cm)	55 lbs./25kg	
FTT1?-16T?-???-?-?-?	Trapezoid- Medium	31.5" x 63" (80cm x 160cm)	60 lbs./27kg	
FTT1?-18T?-???-?-?-?	Trapezoid- Large	35.5" x 71" (90cm x 180cm)	66 lbs./30kg	
FTT1?-12S?-???-?-?-?	Half Round- Small	47.25" (120cm)	51 lbs./23kg	
FTT1?-16S?-???-?-?-?	Half Round- Medium	63" (160cm)	55 lbs./25kg	
FTT1?-18S?-???-?-?-?	Half Round- Large	71" (180cm)	62 lbs./28kg	

? = Customization Option

29" (74cm) or 30" (76.5cm) height also available

In Use Dimensions

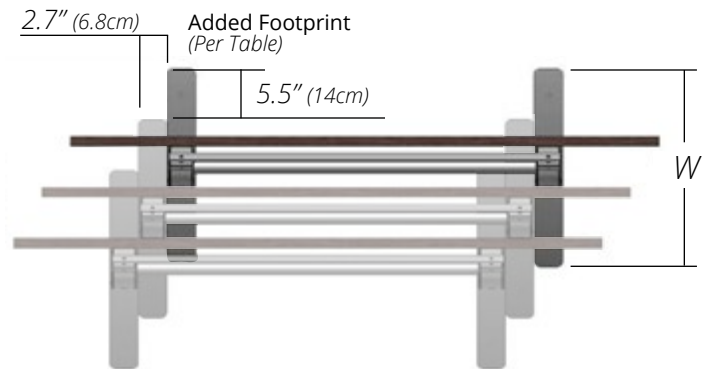
Description	Dimensions (L x W x H)
Rectangle- Small	23.6" x 47.25" x 28" (60cm x 120cm x 72cm)
Rectangle- Medium	31.5" x 63" x 28" (80cm x 160cm x 72cm)
Rectangle- Large	35.5" x 71" x 28" (90cm x 180cm x 72cm)
Trapezoid- Small	23.6" x 47.25" x 28" (60cm x 120cm x 72cm)
Trapezoid- Medium	31.5" x 63" x 28" (80cm x 160cm x 72cm)
Trapezoid- Large	35.5" x 71" x 28" (90cm x 180cm x 72cm)
Half Round- Small	23.6" x 47.25" x 28" (60cm x 120cm x 72cm)
Half Round- Medium	31.5" x 63" x 28" (80cm x 160cm x 72cm)
Half Round- Large	35.5" x 71" x 28" (90cm x 180cm x 72cm)



Storage Dimensions

Description	Dimensions When Flipped Up* Single Table (L x W x H)
Rectangle- Small	47.25" x 25.6" x 37.4" (120cm x 65cm x 95cm)
Rectangle- Medium	63" x 25.6" x 41.4" (160cm x 65cm x 105cm)
Rectangle- Large	71" x 25.6" x 43.4" (180cm x 65cm x 110cm)
Trapezoid- Small	47.25" x 25.6" x 35.5" (120cm x 65cm x 90cm)
Trapezoid- Medium	63" x 25.6" x 43.4" (160cm x 65cm x 110cm)
Trapezoid- Large	71" x 25.6" x 47.25" (180cm x 65cm x 120cm)
Half Round- Small	47.25" x 25.6" x 35.5" (120cm x 65cm x 90cm)
Half Round- Medium	63" x 25.6" x 39.4" (160cm x 65cm x 100cm)
Half Round- Large	71" x 25.6" x 41.4" (180cm x 65cm x 105cm)

*Based on the Standard 28" (72cm) Height



Nesting Storage

Nest any shape or size table tightly together to decrease the overall storage footprint. Roll tables efficiently as nested sets into storage instead of rolling them individually.



WANT TO FIND OUT MORE?

Visit www.sicoinc.com to see more of our wide variety of innovative products.



SICO Incorporated -
Global Headquarters
SICO America Inc.
Tel: 1 800 328 6138
Email: sales@sicoinc.com

SICO Japan Inc.
Tel: +81(3) 3288 0145
Email: info@sico-japan.com

SICO Asia PTE LTD
Tel: (65) 6500 0800
Email: sales@sicoasia.com

SICO Middle East DMCC
Tel: (971) 4 422 8259
Email: sales@sico-me.com

SICO Europe Limited
Tel: +44(0) 1303 234 000
Email: sales@sico-europe.com

SICO South Pacific Limited
Tel: +61(2) 4336 1333
Email: sales@sicosp.com.au