



Performance Drape Color Options

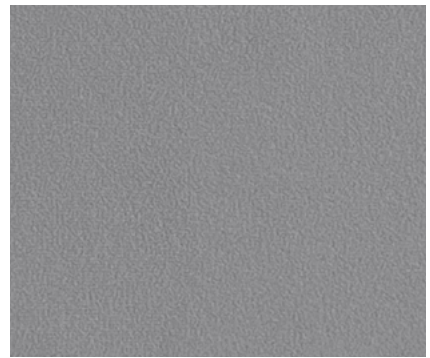
No staging system is complete without the finishing touch of draperies. SICO's polyester velour Performance drapes are plush, 100% blackout, and wash beautifully. Each drape is crafted with a continuous strip of hook and loop material on the back, making installation onto the stage at any location quick and easy.



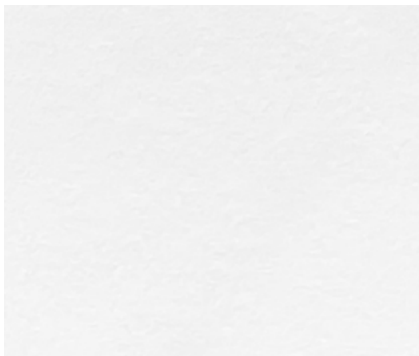
Black



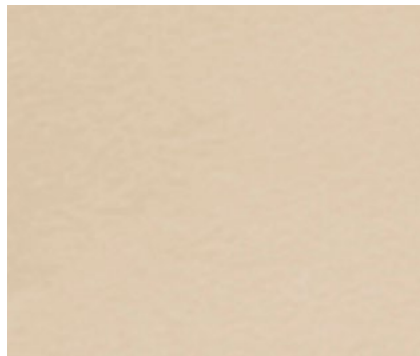
Slate Gray



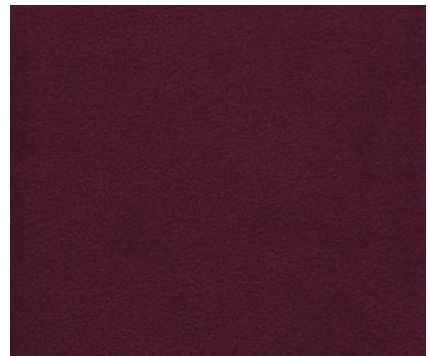
Ash Gray



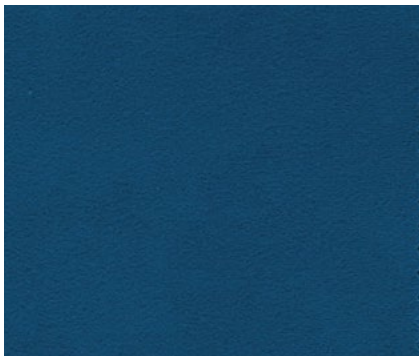
White



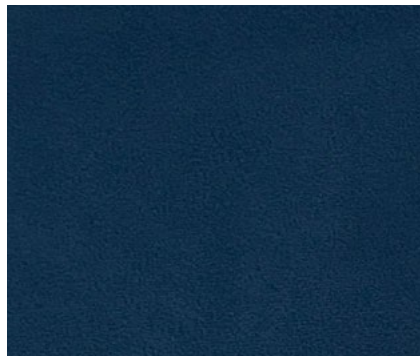
Pearlescent Ivory



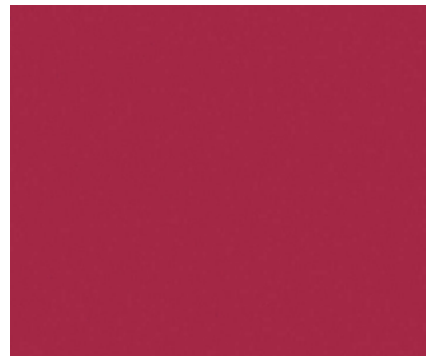
Brilliant Burgundy



Royal Blue



Navy Blue



Crimson Red

* Fabric options subject to change. Colors are representative only.

Performance Drape Details

Fire Retardant Information

Fabric complies with NFPA 701 Small Scale Test, the California Title 19, Section 1237 Small Scale Test, and Canadian CAN/ULC-S109-14 Small and Large Scale Flame Test. The fabric is Inherently Flame Resistance and will not lose its Flame Retardancy, even after repeated washing.

Fabric Care Instructions

Drapes may be machine washed in cold water using a mild liquid detergent. Drapes may be dried in a conventional clothes dryer using the "Air Only" setting and ironed with a cool iron. Drapes may shrink significantly if exposed to heat over 120° F.

