



Room Makers™ Wallbed System



Features

The SICO® Room Makers™ Wallbed System combines a traditional folding bed design with the comfort of a conventional innerspring mattress and foundation. It's the perfect replacement for uncomfortable sofa beds. SICO® has become the proven wallbed of choice for major hotel chains, timeshare properties and residential applications around the world.



① SICO® Mattress

② Padboard

③ Headboard

④ Auto Pillow Storage

⑤ Leg Support

⑥ Compression Mechanism

⑦ SICO® Foundation

⑧ Easy Adjustment

Build It Your Way

Choose to customize the finishes, cabinetry, wall position and more. Our wallbeds are designed to be customized to fit your exacting needs. Choose finishes that complement or blend with your existing decor for a seamless look.

Our cabinetry is handmade in the USA and built for commercial use. Choose from the popular veneer, shaker, raised panel or molding or choose to have something unique to your space.



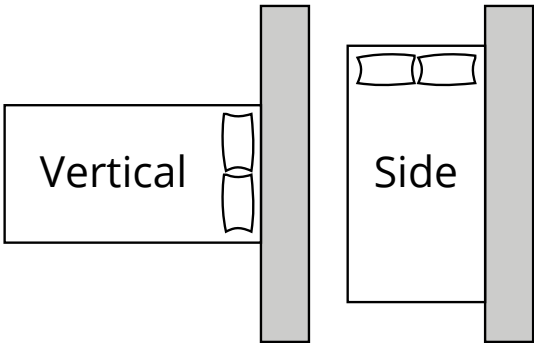
Mattress and Foundation

Choose from all standard sizes and three mattress types to perfectly suit your sleeping needs. Design can accommodate all standard bed sizes, including king and pillowtops. The SICO® mattress offers the sleeping comfort of a conventional bed. Bedding is custom made to SICO's exacting specifications. The foundation is attached to the bed frame with screws. The mattress is secured to the foundation with a permanently positioned hook and loop mattress strap.



Vertical Fold or Side Fold

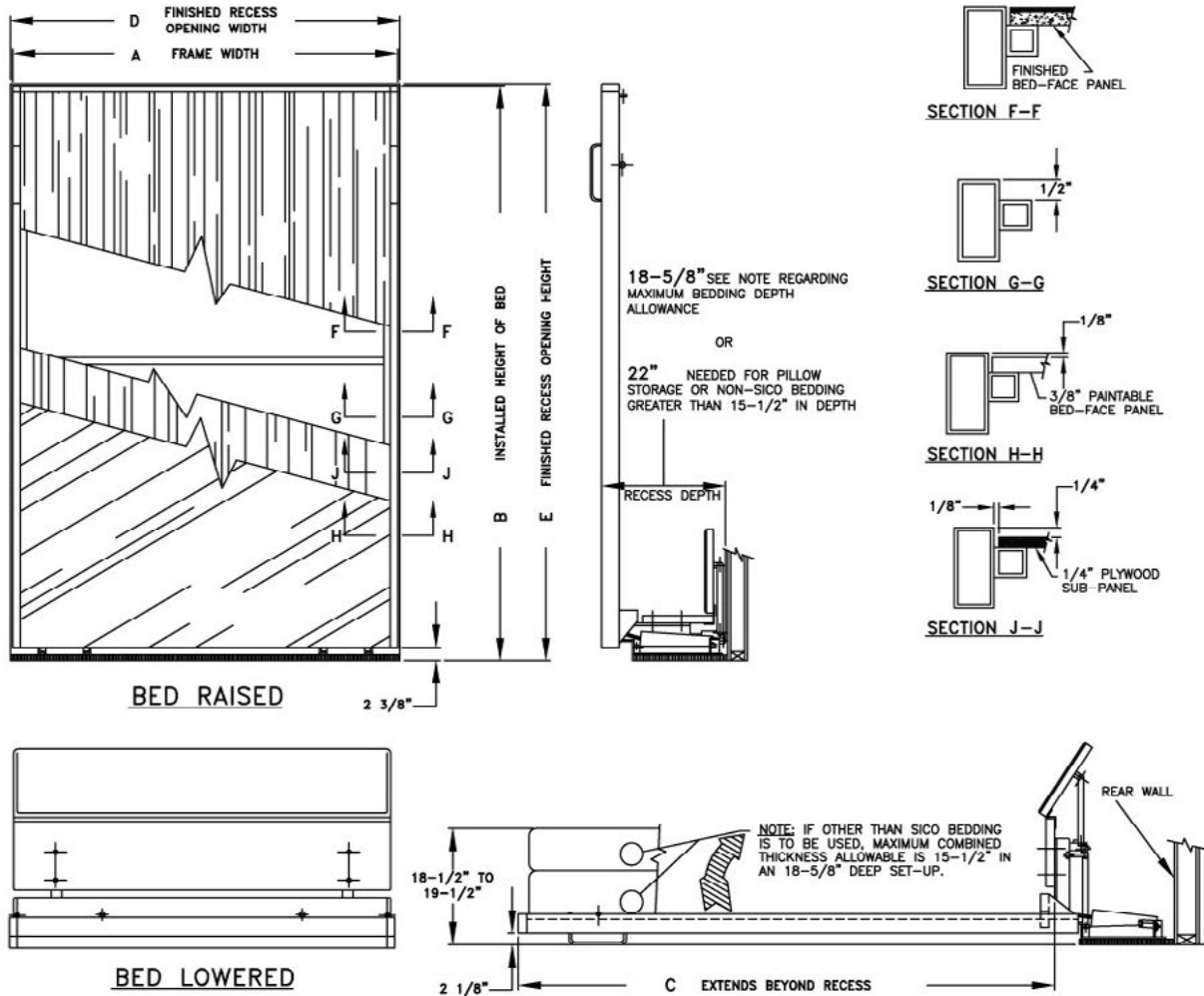
The side fold is best for low ceilings or tight vertical space. Choose vertical fold for a more conventional setup and to save horizontal floor space.



	Box Spring Mattress	Auto Pillow Storage	European Slatting	Compacted Footprint
Room Maker	●	●		
Eurobed			●	●



Specifications - Vertical Fold



BED SPECIFICATIONS

MATERIAL SPECIFICATIONS:

FRAME: 16-GAUGE OR HEAVIER C.R.E.W. STEEL TUBING, ELECTRIC ARC WELDED CONSTRUCTION, BAKED ON ENAMEL FINISH STANDARD, (4) COLORS TO CHOOSE FROM, RUBBER CORNERS.

HINGES: 1/8" THICK STEEL, ELECTRIC ARC WELDED.

PADBOARD: VINYL COVERING OVER 1/2" FOAM ON 1/2" A-C PLYWOOD

HEADBOARD: VINYL COVERING OVER 3/4" PARTICLE BOARD.

BASEPLATE: 3/4" PAINTED PLYWOOD.

SPRINGS: #5160 STEEL.

CONSTRUCTION SPECIFICATIONS:

THE BED IS AVAILABLE IN SIX SIZES THAT ARE CHARTED IN THE MIDDLE OF THE DRAWING.

THIS BED IS DESIGNED FOR INSTALLATION IN 22" OR DEEPER RECESS ONLY.

THE BOTTOM OF THE BED FRAME PROVIDES THE WALL CLOSURE. BED IS SHIPPED EITHER WITH NO FACE, 1/4" PLYWOOD SUB-PANEL, 3/8" PAINTABLE FACE PANEL OR WITH 3/8" FINISHED FACE PANEL. THE SUB-PANEL IS RECESSED AND TO THAT MAY BE ATTACHED A FINISHED FACE PANEL (1/4" MAXIMUM THICKNESS) PROVIDED BY THE CUSTOMER.

THE FRAME IS BOLTED TO THE HINGE ASSEMBLIES, WHICH ARE SECURED TO THE BASEPLATE. THE BOX SPRING IS ATTACHED TO THE BED FRAME AND THE MATTRESS ATTACHES TO THE BOXSPRING. ALL ARE PERMANENTLY POSITIONED. ADJUSTMENT BOLTS ALLOW EASY ALIGNMENT IN THE RECESS OPENING AND COMPENSATE FOR THE WEIGHT DIFFERENCES IN BED FACES, BOX SPRINGS AND MATTRESSES.

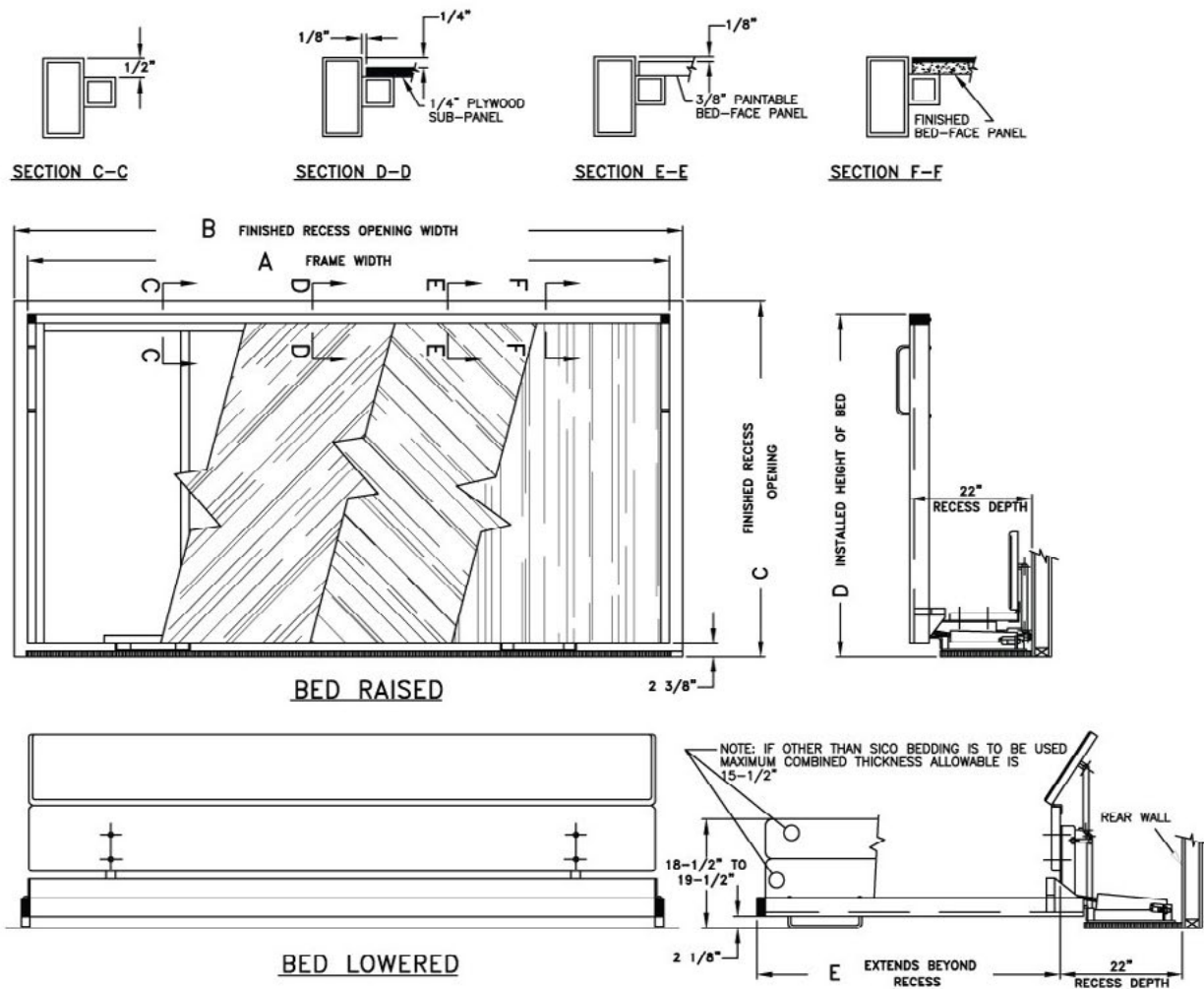
THE BED IS SHIPPED WITH (6) FLOOR ANCHOR AND TOGGLE BOLTS DESIGNED FOR HARD CONCRETE OR WOOD CONSTRUCTION. OTHER FLOORING WILL REQUIRE DIFFERENT FLOOR ANCHORS.

BED IS CARTOONED AND SHIPPED WITH THE BED FRAME, HANDLES, BASEPLATE, PADBOARD AND HEADBOARD IN ONE CARTON. THE ACCESSORY PACK IS CARTOONED SEPARATELY AND INCLUDES SICO POWER PACKS, HEADBOARD SUPPORTS, FLOOR ANCHORS AND ASSEMBLY INSTRUCTIONS.

BED SIZE	A	B	C	D	E
TWIN REGULAR	40-1/2"	83-1/8"	77-3/4"	41"	83-1/2"
TWIN EXTRA	40-1/2"	88-1/4"	82-7/8"	41"	88-5/8"
DOUBLE REGULAR	55-1/2"	83-1/8"	77-3/4"	56"	83-1/2"
DOUBLE EXTRA	55-1/2"	88-1/4"	82-7/8"	56"	88-5/8"
QUEEN	62"	88-1/4"	82-7/8"	62-1/2"	88-5/8"
KING	78-1/2"	88-1/4"	82-7/8"	79"	88-5/8"

* Frame dimensions only. Cabinetry dimensions not included.

Specifications - Side Fold



BED SIZE	A	B	C	D	E
TWIN REGULAR	76-1/2"	77"	49"	47-1/8"	41-3/4"
TWIN EXTRA	82-1/2"	83"	49"	47-1/8"	41-3/4"
DOUBLE REGULAR	76-1/2"	77"	64"	62-1/8"	56-3/4"
DOUBLE EXTRA	82-1/2"	83"	64"	62-1/8"	56-3/4"
QUEEN	82-1/2"	83"	70-1/2"	68-5/8"	63-1/4"

THE FOLLOWING STANDARD BED FACE OPTIONS ARE AVAILABLE:

MODEL NO.	BED FACE
1926-	NO FACE PANEL
1927-	1/4" PLYWOOD SUB-PANEL
1929-	3/8" PAINTABLE PANEL
1930-	FINISHED FACE (SEE NOTE 1)

THE FOLLOWING STANDARD BED FRAME FINISHES ARE AVAILABLE:

SUFFIX NO.	BED FRAME/VINYL FINISH
-001 THRU -005	STANDARD COLOR FRAME(SEE NOTE 2)
-101 THRU -105	CHROME TRIM
-201 THRU -205	BRASS TRIM
-301 THRU -305	SPECIAL COLOR FRAME
-401 THRU -405	SPECIAL COLOR VINYL
-501 THRU -505	SPECIAL COLOR FRAME AND VINYL
-601 THRU -605	SPECIAL COLOR VINYL WITH CHROME TRIM
-701 THRU -705	SPECIAL COLOR VINYL WITH BRASS TRIM

NOTES:

- 1) FINISHED FACES COME IN (4) STANDARD COLORS:- 18 ALMOND
-22 ATLANTIC OAK, -32 BLACK, -33 WHITE
- 2) BED FRAMES COME IN (4) STANDARD COLORS: ALMOND, MOCHA BROWN, BLACK, WHITE.

BED SPECIFICATIONS

MATERIAL SPECIFICATIONS:

FRAME: 16-GAUGE OR HEAVIER C.R.E.W. STEEL TUBING, ELECTRIC ARC WELDED CONSTRUCTION. BAKED ON ENAMEL FINISH STANDARD, (4) COLORS TO CHOOSE FROM, RUBBER CORNERS.

HINGES: 3/16" THICK STEEL, ELECTRIC ARC WELDED.

PADBOARD: VINYL COVERING OVER 1/2" FOAM ON 1/2" A-C PLYWOOD

HEADBOARD: VINYL COVERING OVER 3/4" PARTICLE BOARD.

BASEPLATE: 3/4" PAINTED PLYWOOD.

SPRINGS: #5160 STEEL.

CONSTRUCTION SPECIFICATIONS:

THE BED IS AVAILABLE IN FIVE SIZES THAT ARE CHARTED IN THE MIDDLE OF THE DRAWING.

THIS BED IS DESIGNED FOR INSTALLATION IN 22" OR DEEPER RECESS ONLY.

THE BOTTOM OF THE BED FRAME PROVIDES THE WALL CLOSURE. BED IS SHIPPED EITHER WITH NO FACE, 1/4" PLYWOOD SUB-PANEL, 3/8" PAINTABLE FACE PANEL OR WITH 3/8" FINISHED FACE PANEL. THE SUB-PANEL IS RECESSED AND TO THAT MAY BE ATTACHED A FINISHED FACE PANEL(1/4" MAXIMUM THICKNESS) PROVIDED BY THE CUSTOMER.

THE FRAME IS BOLTED TO THE HINGE ASSEMBLIES, WHICH ARE SECURED TO THE BASEPLATE. THE BOX SPRING IS ATTACHED TO THE BED FRAME AND THE MATTRESS ATTACHES TO THE BOXSPRING. ALL ARE PERMANENTLY POSITIONED. ADJUSTMENT BOLTS ALLOW EASY ALIGNMENT IN THE RECESS OPENING AND COMPENSATE FOR THE WEIGHT DIFFERENCES IN BED FACES, BOX SPRINGS AND MATTRESSES.

THE BED IS SHIPPED WITH (6) FLOOR ANCHOR AND TOGGLE BOLTS DESIGNED FOR HARD CONCRETE OR WOOD CONSTRUCTION. OTHER FLOORING WILL REQUIRE DIFFERENT FLOOR ANCHORS.

BED IS CARTOONED AND SHIPPED WITH THE BED FRAME, HANDLES, BASEPLATE, PADBOARD AND HEADBOARD IN ONE CARTON. THE ACCESSORY PACK IS CARTOONED SEPARATELY AND INCLUDES SICO POWER PACKS, HEADBOARD SUPPORTS, FLOOR ANCHORS AND ASSEMBLY INSTRUCTIONS.

* Frame dimensions only. Cabinetry dimensions not included.



SICO Incorporated -
Global Headquarters

SICO America Inc.

Tel: 1 (800) 328 6138

Email: sales@sicoinc.com

SICO Asia PTE LTD

Tel: (65) 6500 0800

Email: sales@sicoasia.com

SICO Europe Limited

Tel: +44(0) 1303 234 000

Email: sales@sico-europe.com

SICO Japan Inc.

Tel: +81(3) 3288 0145

Email: info@sico-japan.com

SICO Middle East DMCC

Tel: (971) 4 880 9388

Email: sales@sico-me.com

SICO South Pacific Limited

Tel: +61(2) 4336 1333

Email: sales@sicosp.com.au

sicoinc.com 