

# TABLE MAINTENANCE GUIDE



Maintaining your SICO® Mobile Folding Table is important for safety, longevity and product performance. Using this simple 5-point check you can effectively service and maintain your mobile folding table for years to come.

*If you have any questions regarding the maintenance or inspection of your SICO® Table, please call SICO® Customer Care at 1-800-424-0796 or call the SICO® Dealer servicing your area.*

## 1

### Table Surface

**Table Surface** - It is important to properly clean food contact surfaces. Proper washing and disinfecting procedures should be followed for cleaning tables and food preparation surfaces.

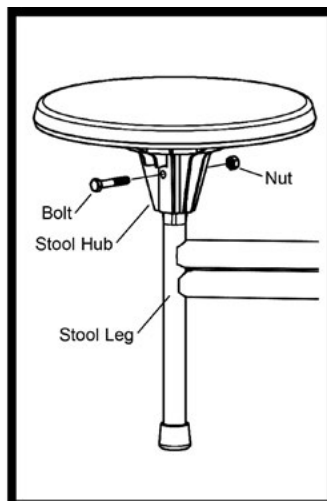
To clean the surface, use a mild soap and detergent. Rinse thoroughly with warm water and wipe dry. Disinfect tables by using a diluted bleach water solution.

**Recommended Cleaners:** Windex®, Glass Plus®, Fantastik®, Mr. Clean®, Formula 409®

## 2

### Stools & Stool Hardware

**Stools & Stool Hardware** - Visually inspect the top and sides of each stool including the stool hub for cracks, chips or missing hardware. The Stool leg should be straight with the glide touching the ground. Stool should be replaced if they are cracked, chipped or if there is discoloration on the top of the stool.

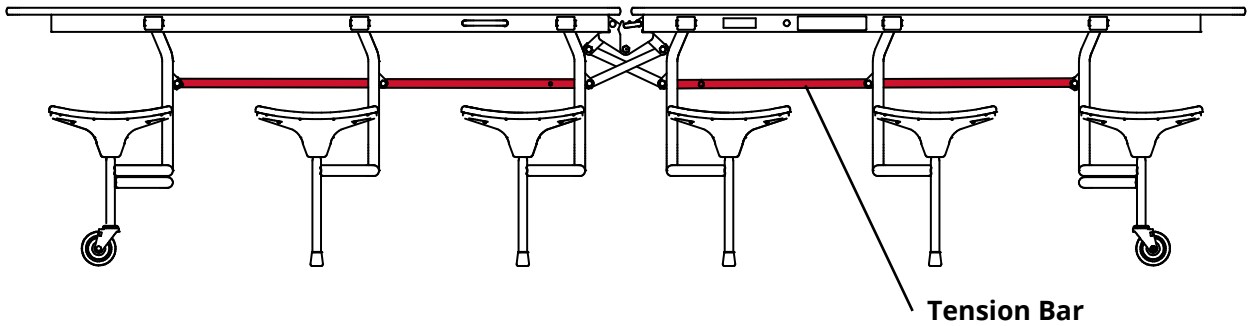


# 3

## Torsion Bars & Tension Bars

**Torsion Bars** - When operating, if the table is heavy to open or fold, the torsion bars should be replaced.

**Tension Bars** - Visually inspect the horizontal Tension Bars to ensure they are straight. The Tension Bar should be replaced if it is bent.

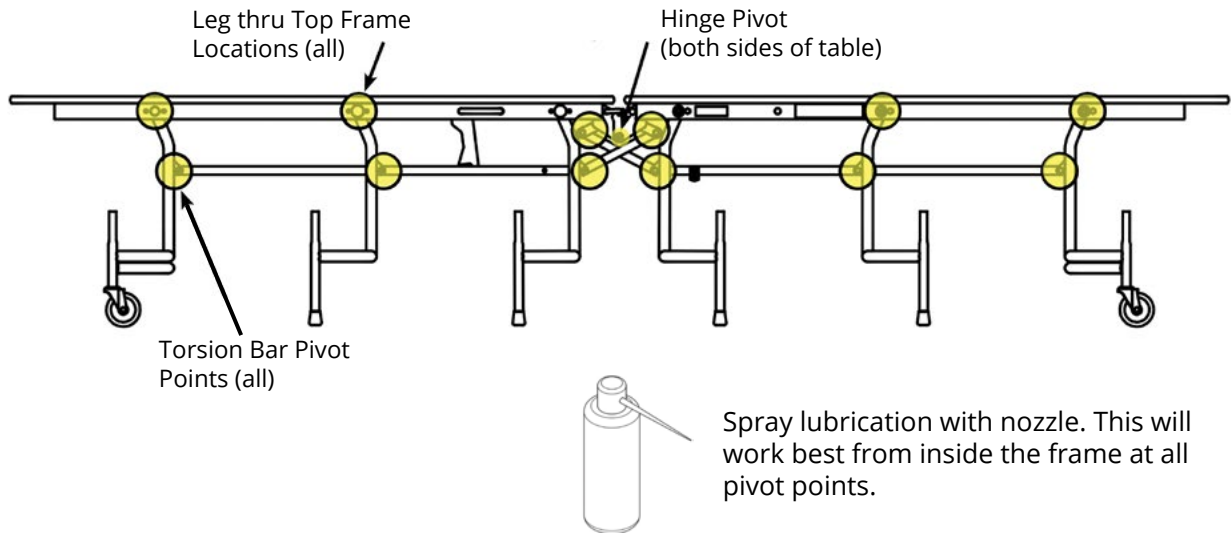


**Maintenance Tip** - Fold up your SICO® Tables every day to avoid wear on the torsion bars.

# 4

**Pivot Points** - Lubricate all pivot points with a few drops of food grade lubricant.

Every six (6) months lubricate all pivot points of the table using food grade spray lubrication oil (such as LPS-2, not penetrating oils or WD-40) on hinge points (where center lock nests), where legs go through top frames and all torsion bar pivot points. Wipe any excess lubrication with a clean cloth.



# 5

## Glides & Casters

**Glides** - Replace worn, cracked or missing glides.

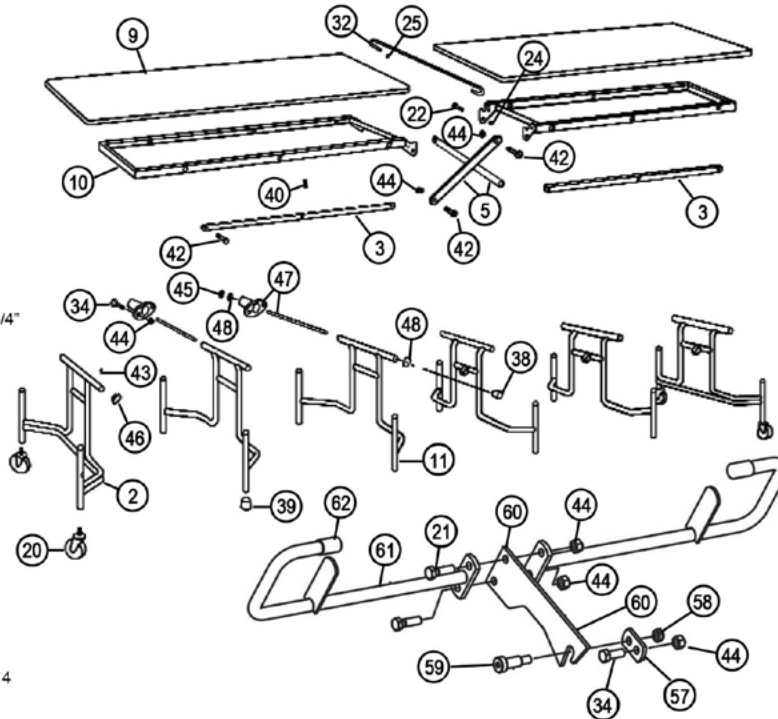
**Casters** - Make sure all casters are securely attached to the leg of the table. Replace all cracked or broken casters.

## TC-65 Table Parts Lists

### ITEM DESCRIPTION

- 2 Leg Weldment, outside
- 3 Bar, tension
- 5 Bar, X
- 9 Top
- 10 Frame Weldment, top
- 11 Leg Weldment, inside
- 20 Caster, 4"
- 22 Cap, Screw, 1/2" x 1"
- 24 Locknut, 1/2"
- 25 Pushnut, flat
- 32 Arm, lock
- 34 Cap Screw, 3/8" x 1"
- 38 Tube Cap, 1"
- 39 Glide, black, 1"
- 40 Rivet, drive
- 42 Cap, Screw, 3/8" x 1-1/4"
- 43 Screw, drive, #6 x 1/4"
- 44 Locknut, 3/8"
- 45 Pushnut, 3/8" hat
- 46 Tube Plug, 1"
- 47 Bar, torsion
- 47 Housing
- 48 Pushnut, flat, 3/8"
- 57 Clip
- 58 Locknut, 3/8" Thin
- 59 Shoulder Bolt
- 60 Hook
- 61 Lock Rod
- 62 Vinyl Cap, 5/8"
- 90 Stool
- 91 Screw, M8-1.25x45
- 92 Lock Nut, M8-1.25
- 93 Stool Assembly, Series 4

**MAINTENANCE:** Oil pivot points every six months. Wash tops with soap and water.



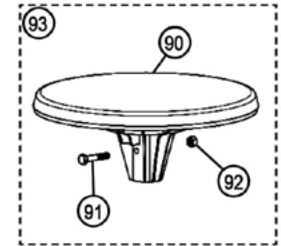
### When Ordering:

**All Parts.** Indicate table Serial No., height, length, Serial No. is on frame, near center of table

**Tops.** Indicate color, size

**Legs.** Indicate table height.

**For parts or pricing, contact your local dealer or SICO Customer Service.**



Part No. 112664 Rev. H

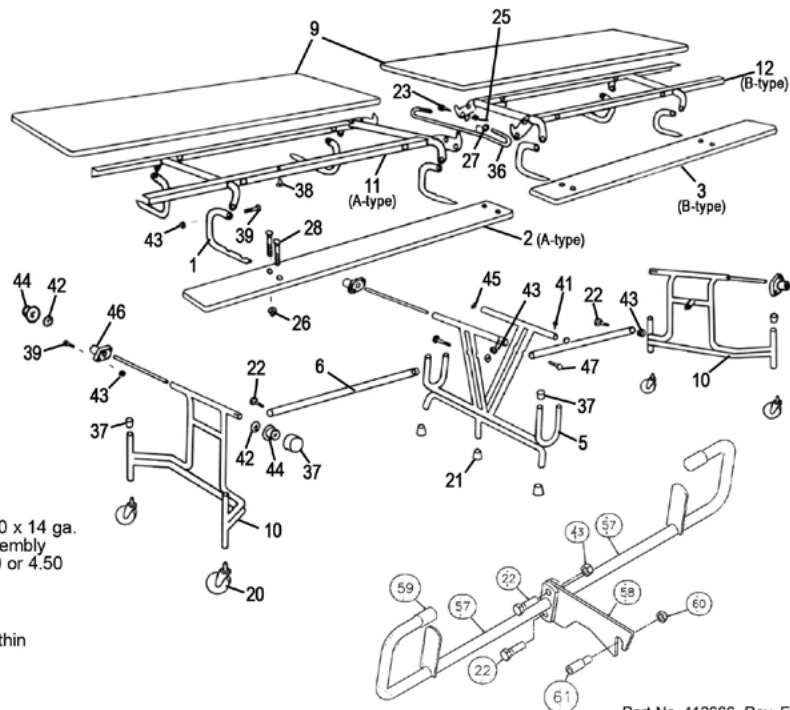
## BY-65 Table Parts Lists

### Item Description

- 1 Bench Bracket
- 2 Benchboard
- 3 Benchboard
- 5 Center Frame Assembly
- 6 Tension Bar
- 9 Top
- 10 Outside Leg Weldment
- 11 Top Frame Weldment
- 12 Top Frame Weldment
- 20 Swivel Caster
- 21 Glide Cap, 1" round
- 22 Screw C HH .38-24 x 1.25
- 23 Screw C HH .50 x 13 x 1.00
- 24 Washer Flat .53 x .88
- 25 Nut Stop .50-13
- 26 Nut Acorn .31-18
- 27 Nut Push .50 Washer
- 28 Screw Weld .31-18 x 2.00
- 36 Lock Arm 1/2 dia.
- 37 Glide Cap Round 1"
- 38 Rivet Drive .25 x .53
- 39 Screw C HH .38-24 x 1.00
- 41 Screw Dr Round #6 x .25
- 42 Nut Push .38 Washer
- 43 Nut Stop .38-24
- 44 Nut Push .38 Cup

### Item Description

- 45 Plug Round 1.00 x 14 ga.
- 46 Torsion Bar Assembly
- 47 Cap Screw 2.00 or 4.50
- 57 Lock rod
- 58 Hook
- 59 Vinyl cap, 5/8"
- 60 Locknut .38-16 thin
- 61 Shoulder bolt



Part No. 112666 Rev. E



*WANT TO FIND OUT MORE?*

Visit [www.sicoinc.com](http://www.sicoinc.com) to see more of our wide variety of innovative products.



**SICO Incorporated -**  
Global Headquarters  
**SICO America Inc.**  
Tel: 1 800 328 6138  
Email: [sales@sicoinc.com](mailto:sales@sicoinc.com)

**SICO Japan Inc.**  
Tel: +81(3) 3288 0145  
Email: [info@sico-japan.com](mailto:info@sico-japan.com)

**SICO Asia PTE LTD**  
Tel: (65) 6500 0800  
Email: [sales@sicoasia.com](mailto:sales@sicoasia.com)

**SICO Middle East DMCC**  
Tel: (971) 4 422 8259  
Email: [sales@sico-me.com](mailto:sales@sico-me.com)

**SICO Europe Limited**  
Tel: +44(0) 1303 234 000  
Email: [sales@sico-europe.com](mailto:sales@sico-europe.com)

**SICO South Pacific Limited**  
Tel: +61(2) 4336 1333  
Email: [sales@sicosp.com.au](mailto:sales@sicosp.com.au)