



Multi-Flex

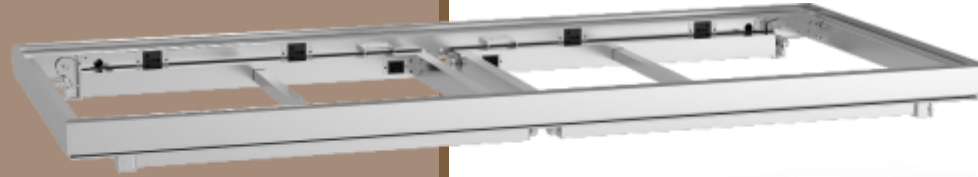
FLEXIBILITY AT ITS BEST

*** A MODULAR CONCEPT DESIGNED
WITH YOUR OPERATION IN MIND,
MAKES IT EASY TO USE AND
FLEXIBLE IN SETUPS ***



Size: 1840 x 800 x 850mm

MULTI-FLEX - THE ULTIMATE CONCEPT



A STEADY DURABLE FOLDING LEG
UNDERSTRUCTURE WITH MODULAR TOPS.

DESIGNED TO GIVE YOU THE ULTIMATE SETUP
OPTIONS, INTERCHANGEABLE IN NO TIME.

ENSURING YOU ARE READY FOR ANY EVENT.







“MF” DESIGN FEATURES;

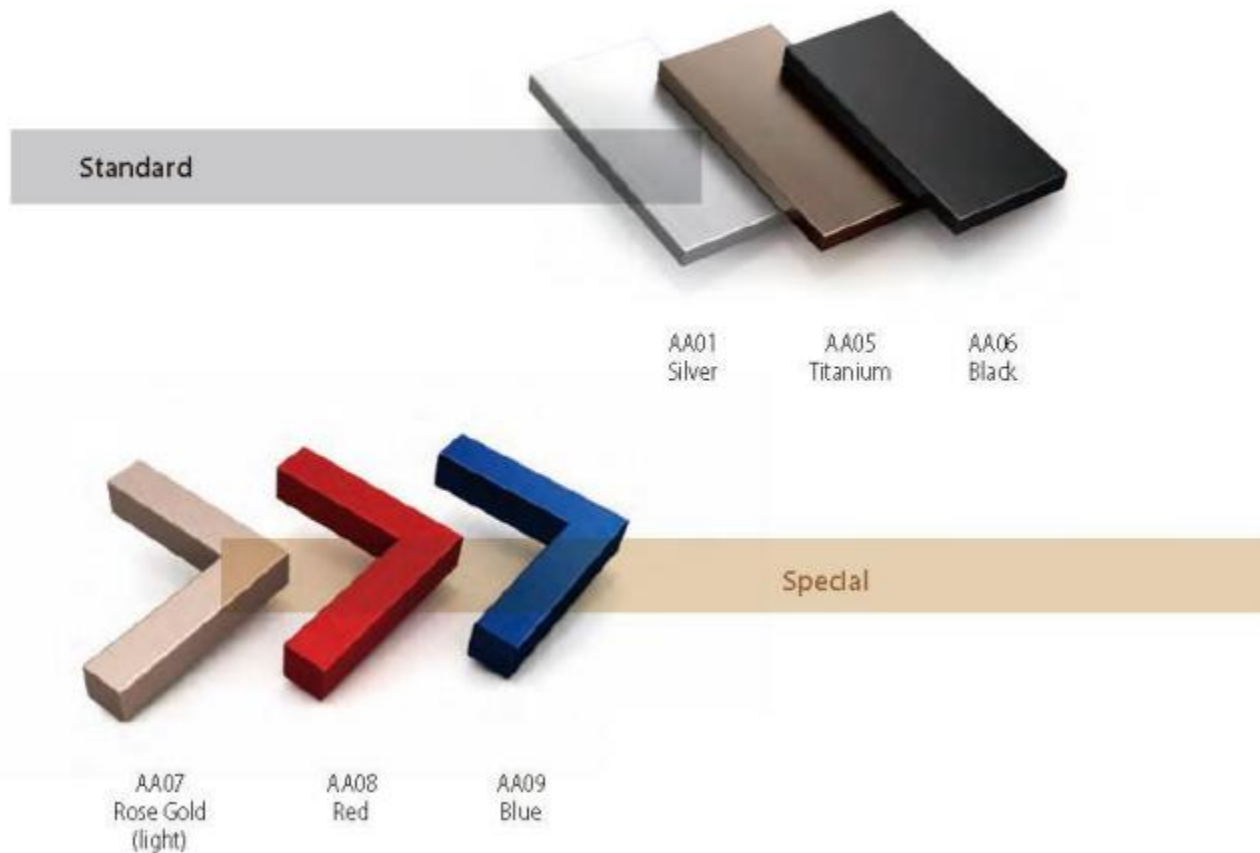
- ✓ **Deluxe Laminated** (HPL) MDF wood tops and Module with Alu Protection Rim (Can be setup as required – “Mix and Match”)
- ✓ **Anodized Aluminum** Understructure (Easy folding leg system with locking device)
- ✓ **Removable MDF middle shelf** with HP Laminate finish (upperside matching top colour, underside black) with Alu protection rim
- ✓ **Integrated Power Management;** 4pcs Power Sockets (@2pcs go in one 16A line)

VARIOUS OPTIONS

Anodized Alu Frame & Rim Colours

■ VARIOUS OPTIONS

Anodized Alu Frame & Rim Colours



MATCH YOUR
INTERIOR
DESIGN

GIVE OUR DESIGN
YOUR HOTEL'S SIGNATURE,
BY CHOOSING
YOUR OWN COLOUR
COMBINATION...

Power Management Solutions

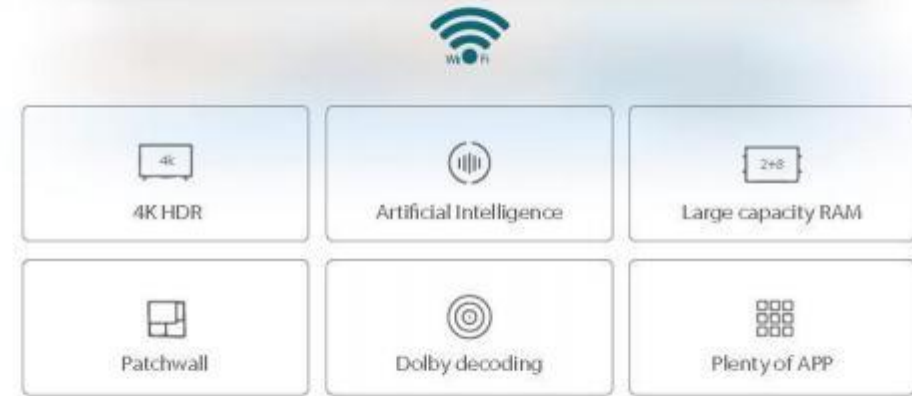
⊕ Build-in





Spectacular TV- Front Panel

Enables your customer to
upload videos & slideshows



- *RICH INTERFACE, VERSATILE & HANDY*

- *4KHDR allows clear picture and movie quality*



Endless Module Options



Modules

Modules – $\frac{1}{4}$

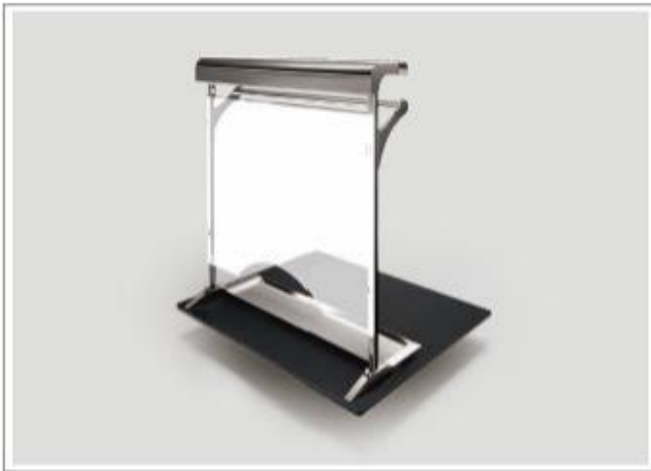
- Induction Hot Holding
- Induction Cooking
- Boiling Unit with four Hole Cover & Baskets
- Boiling Unit with Double Soup Insert
- Boiling Unit with Dim Sum Basket Holder
- Boiling Unit with 1/3 GN Inserts
- Steam Hot Holding
- Induction Wok Cooking (MF only)

Modules – $\frac{1}{2}$

- BJ Duck & Chinese BBQ
- F&B Display (Ice Well)
- Carving
- Hot Holding
- Hot Plate
- Induction Wok Cooking
- Flat Grill (MF only)

BJ Duck & Chinese BBQ

With removable stainless steel rack



1/2

Unit

IDEAL FOR

ROAST & BBQ MEAT PRESENTATION,
COLD CUT & HAM SERVING

Grill Plate

(Electric)



1/2

Unit



No
Humidity



Electric

IDEAL FOR

A LA MINUTE COOKING OF
PORTIONED FOOD

Carving

with Heating Lamps



1/2

Unit

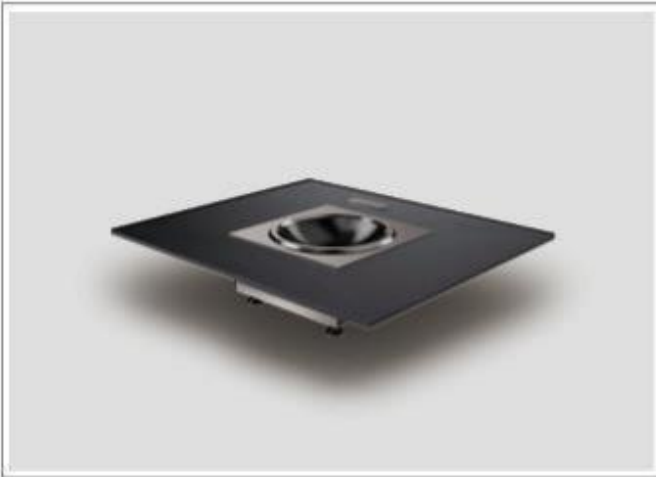


Electric

IDEAL FOR

PRESENTATION & SERVING OF
ANY TYPE OF HOT CARVING OF MEAT
& SEAFOOD

Wok
(Induction)



1/4
Unit

1/2
Unit



IDEAL FOR

ASIAN STIR-FRIED DISHES

Boiling
with 4 Baskets



1/4
Unit



IDEAL FOR

PASTA, DUMPLINGS AND VEGETABLES

Cooking – Deluxe
(Induction)



1/4
Unit



IDEAL FOR

A LA MINUTE COOKING OF
PORTIONED FOOD

Hot Holding – Boiling Unit with GN1/3 Food Pans



1/4

Unit



High
Humidity



Electric

IDEAL FOR

**HOT SAUCES,
STEWES AND WET MAIN DISHES**

Hot Holding – Boiling Unit with Soup Inserts



1/4

Unit



High
Humidity



Electric

IDEAL FOR

SOUPS, CONGEE & LIQUID DESSERTS

Hot Holding - Boiling Unit with Dim Sum Basket Holder



1/4

Unit



High
Humidity



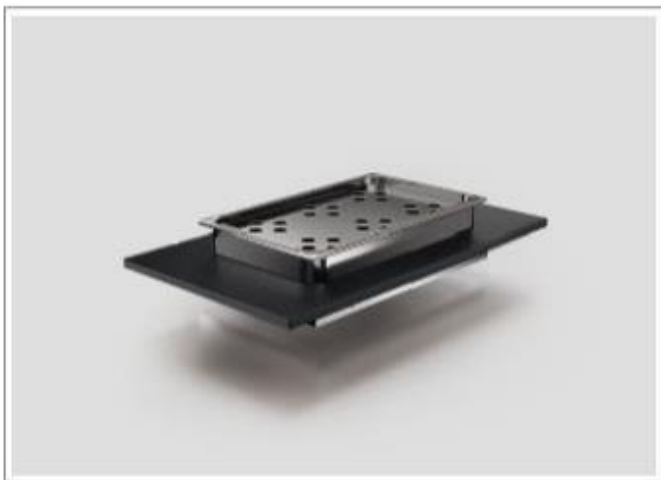
Electric

IDEAL FOR

STEAMED HOT HOLDING

Steam Hot Holding

with electric Bain-Marie



1/4

Unit

High
Humidity

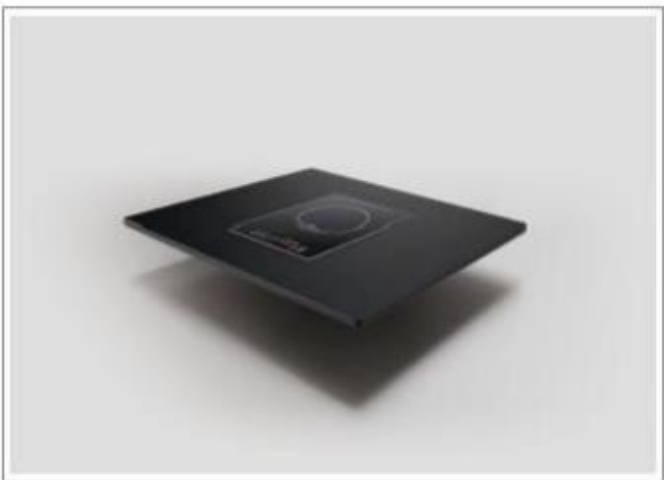
Electric

IDEAL FOR

HOT HOLDING OF STEAMED FOOD

Hot Holding

(Induction)



1/4

Unit

1/2

Unit

Induction

IDEAL FOR

**CHAFING DISH (Round or Square),
OR ANY INDUCTION FRIENDLY FOOD
PAN & CONTAINER**

Ambient Hot Holding

with Heating Lamps



1/2

Unit

No
Humidity

Electric

IDEAL FOR

BAKED & DEEP-FRIED DISHES

FEATURES

 **HOT HOLDING**

Hot Holding with Electric Plate with Heating Lamps



1½
Unit


No
Humidity


Electric

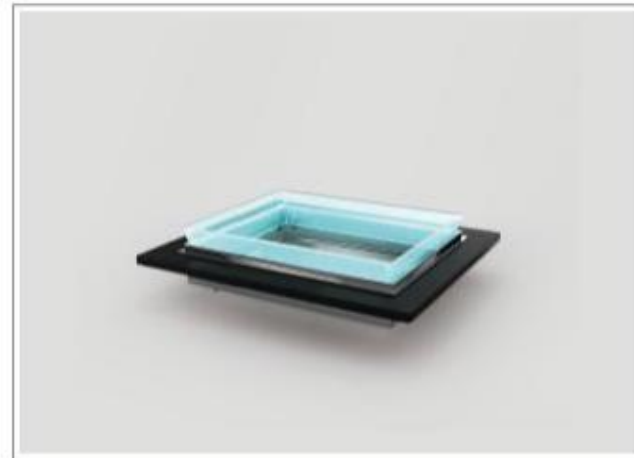
IDEAL FOR

**BREAD & BAKERIES, PIZZA,
WARM DESSERTS, DRY SNACKS &
PLATED DISHES**

 **COLD DISPLAY**



Cold F&B Display (Ice Well)



1½
Unit

IDEAL FOR

**SEAFOOD & SALAD BAR / SUSHI &
SASHIMI / WINE & CHAMPAGNE BAR**

ACCESSORIES - fit your daily functions

Splash Guard
(Table Top Version)



IDEAL FOR

SHIELDING YOUR CUSTOMERS
FROM POSSIBLE SPLASHES DURING
SHOW COOKING

Cutting Board
(Rectangular, with Drip Groove)



IDEAL FOR

ROAST & BBQ MEAT PRESENTATION
COLD CUT & HAM SERVING

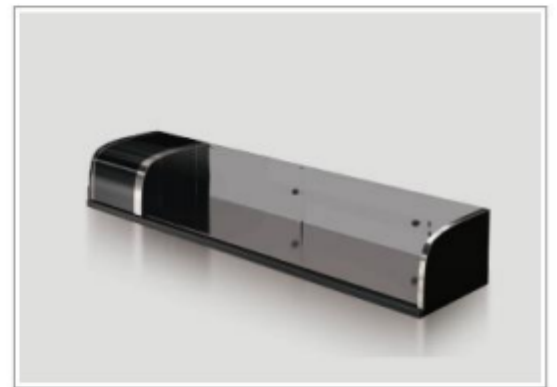
Buffet Lamp
(Table Top Version)



IDEAL FOR

HOT HOLDING: WITH HEATING LAMPS
COLD DISPLAYS: WITH SPOT LIGHTING

Sushi Fridge



IDEAL FOR

SUSHI & SASHIMI DISPLAYS

Order our Multi-Purpose Station and create different setups with our wide range of accessories to fit your daily function requirements.

ACCESSORIES - fit your daily functions

SNEEZE GUARDS – Table Top Versions

防鼻息罩

- WITH LED LIGHTING SYSTEM; Ideal for cold food displays
- WITH HOT LIGHTING SYSTEM; Ideal for hot holding food displays



Sneeze Guard **(small)**

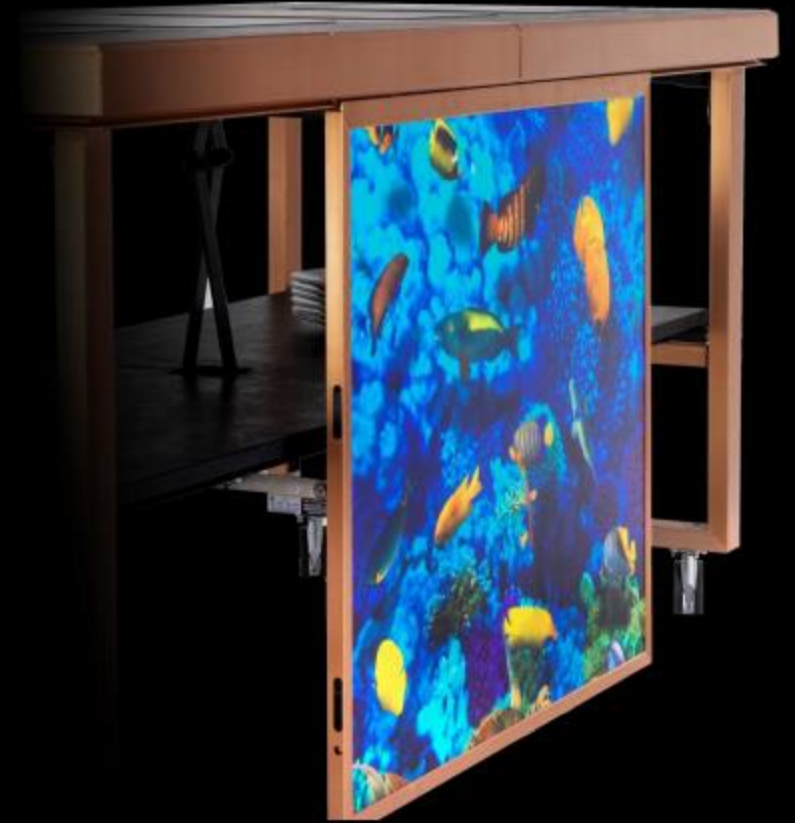


Sneeze Guard **(large)**



UNIQUE PANEL SYSTEM –

Simply hang them on, no tools needed, LED lights automatically



SIDE STATIONS



They come in different heights; with or without casters, matching design with the buffet line

EXHAUST - Mobile / Free-Standing



Laminated Panel with
Aluminum Frame (Match your
Buffet Station Design)

Extension Glass Panel
(folds down for storage)



Stainless Steel (Brushed) Front
Part for easy cleaning

Rolls on its own casters
– easy to put in and out of action

Exhaust System
(Front View)

STORAGE & TRANSPORT TROLLEY – for “MF”

Panel Trolley;

*** Holds any type of front and side panels.



OCA1B - 001

Specially designed to hold the "Multi-Flex" modular buffet system; designated trolleys to hold the understructure middle shelf / all modules / the front and side panels.



OCD1B

“Multi-Flex” Trolley for Understructure & Accessories

- Holds up to 4 complete sets of understructure and middle shelf.
- The specially designed top compartment can hold the heating lamps or additional accessories

“Multi-Flex” Trolley for Modules

- Holds up to 4 complete set of modules (1/4 or 1/2 units).
- The yellow horizontal rails can be moved to adjust the spacing; so as they can hold different module heights.



OCB1B

Standard Station Setups

MULTI-PURPOSE (HOT OR COLD)



Remarks:

- ✓ Ideal for Food Displays as well as Show Cooking

Setup / Top Configuration:

- ⚙ 4 pc Laminated MDF Board (1/4)

Optional:

- ⚙ Different Configuration of Plain Tops
- ⚙ Splash or Sneeze Guard

Power Requirements:

- ⚙ Up to 2 x 2400Watt
- ⚙ 2 x 16A/AC220V

ACTION – CARVING “A”



Remarks:

- ✓ Add Induction Holding Modules as needed
- ✓ Choose between red & natural Heating Bulb

Setup / Top Configuration:

- ⊕ 1 pc Laminated MDF Board (1/2)
- ⊕ 2 pc Laminated MDF Board (1/4)
- ⊕ 2 pcs Heating Lamp
(Table Top Version)

Optional:

- ⊕ Deluxe S/S Stand with Grooved Carving Board
- ⊕ Splash Guard

Power Requirements:

- ⊕ 550 / 1750Watt
- ⊕ 2 x 16A/AC220V

ACTION – CARVING “B”



Remarks:

- ✓ Add Induction Holding Modules as needed
- ✓ Choose between red & natural Heating Bulb

Setup / Top Configuration:

- ⊗ 1 pc Laminated MDF Board (1/2)
- ⊗ 2 pc Laminated MDF Board (1/4)
- ⊗ 1 pc Heating Bridge with Sneeze Guard (Table Top Version)



Optional:

- ⊗ Deluxe S/S Stand with Grooved Carving Board
- ⊗ Splash Guard

Power Requirements:

- ⊗ 1000 / 2200 Watt
- ⊗ 2 x 16A/AC220V

ACTION - WOK COOKING STATION



Remarks:

- ✓ Ideal for Asian food show cooking
- ✓ The wok module must be directly plugged into the hotel's power supply (cannot be plugged into the frame sockets)

Setup / Top Configuration:

- ⊕ 2 Induction WOK Plate Modules
(50-240°C)(1/4)
- ⊕ 2 Laminated MDF Boards (1/4)

Optional:

- ⊕ 2 pc Splash Guards

Power Requirements:

- ⊕ 7000Watt
- ⊕ 2 x 16A/AC220V

COLD FOOD ICE WELL DISPLAY (2X1½)



Remarks:

- ✓ This Station can be used for various F&B Displays on Ice

Setup / Top Configuration:

- ⊕ 2 pcs Ice Well Module A with Acrylic Rim & Insert (no drainage) LED Lighting System (1/2)



Optional:

- ⊕ Light Bridge with Sneeze Guard (Table Top Version)
- ⊕ Drainage System

Power Requirements:

- ⊕ 210 Watt
- ⊕ 2 x 16A/AC220V

COLD FOOD ICE WELL DISPLAY (1X1½)



Remarks:

- ✓ This Station can be used for various F&B Displays on Ice

Setup / Top Configuration:

- ④ 1 pcs Ice Well Module A with Acrylic Rim & Insert (no drainage) LED Lighting System (1/2)
- ④ 1pcs Laminated MDF Board (1/2)

Optional:

- ④ Light Bridge with Sneeze Guard (Table Top Version)
- ④ Drainage System



Power Requirements:

- ④ 210 Watt
- ④ 2 x 16A/AC220V

/ ACTION - SUSHI / SASHIMI



Remarks:

- ✓ This Station can be used for various chilled food displays; options are endless...

Setup / Top Configuration:

- ⊕ 1 pc Laminated MDF Board (1/2)
- ⊕ 2 pc Laminated MDF Board (1/4)
- ⊕ 1 pcs Sushi Fridge (L1500mm)

Optional:

- ⊕ Cutting Boards

Power Requirements:

- ⊕ 400Watt
- ⊕ 2x 16A/AC220V

Add-on Recommendations

Mobile Fixed Station



Remarks:

- ✓ Ideal for any A LA MINUTE grilling
- ✓ Dimensions; 850 x 850 x 850mm

Setup / Top Configuration:

- ⊕ Electric Flat Broiler / Griddle

Optional:

- ⊕ Splash Guard
- ⊕ Matching Design with Main Stations
- ⊕ Exhaust System (build-in)

Power Requirements:

- ⊕ 6050Watt
- ⊕ 1 x 10A & 1 x 32A/AC220V

Mobile Fixed Station



Remarks:

- ✓ Ideal as an addition to the Hot Holding Stations
- ✓ Dimensions; 730 x 730 x 850mm

Setup / Top Configuration:

- ⚙ Electric heated Plate Dispenser
(holds up to 50pcs 20-30cm (8-12") plates)

Optional:

- ⚙ Matching Design with Main Stations

Power Requirements:

- ⚙ 500Watt
- ⚙ 1 x 10A/AC220V

Mobile Fixed Station



Remarks:

- ✓ Ideal for Asian Style Wok Cooking

Setup / Top Configuration:

- ⊕ 1 Build-in Induction Wok
- ⊕ 1 pc Compact Laminate Board (1/2) REV-LAM

Optional:

- ⊕ Splash Guards
- ⊕ Build-in Exhaust System



Power Requirements:

- ⊕ 3550/Watt
- ⊕ 1 x 16A/AC220V

Mobile Fixed Station



Remarks:

- ✓ Ideal for boiling of any kind of food

Setup / Top Configuration:

- ④ 1 Slide-in Boiler with 3 individual compartment; each with 2 baskets
- ④ 1 pc Compact Laminate Board (1/2) REV-LAM

Optional:

- ④ Splash Guard

Power Requirements:

- ④ 6050/Watt
- ④ 1 x 16A & 1 x 10A/AC220V

Mobile Fixed Station



Remarks:

- ✓ Ideal for any kind of F&B cold Displays

Setup / Top Configuration:

- ④ 1 Glass Container (Square) with Protection rim, Drainage System and waterproofed LED lighting system
- ④ 1 pc Compact Laminate Board (1/2) REV-LAM

Power Requirements:

- ④ 150/Watt
- ④ 1 x 10A/AC220V

COMBO SETUPS...



Multi-Flex Combo Setup

Custom Designs are available





Convert your Station Setup in no Time















BUFFFET CONCEPT ADD-ONS

Buffet Tables

Our designer put simplicity & practicality into this design, and with the material chosen it is the perfect match for the buffet stations, and also looks great by its own.



Cocktail Tables

Simple folding understructure with removable LED Top
(build-in rechargeable battery)



EVO Station with 4K Internet TV Panel



Coffee Break
/ Deli Shop
Display Rack

Mobile Coffee Cabinet

SAVING SPACE & LABOUR

They are always ready to use,
one person can arrange
them in a short time to be
operational.

No additional storage space
is needed, since the cabinets
can be neatly put together

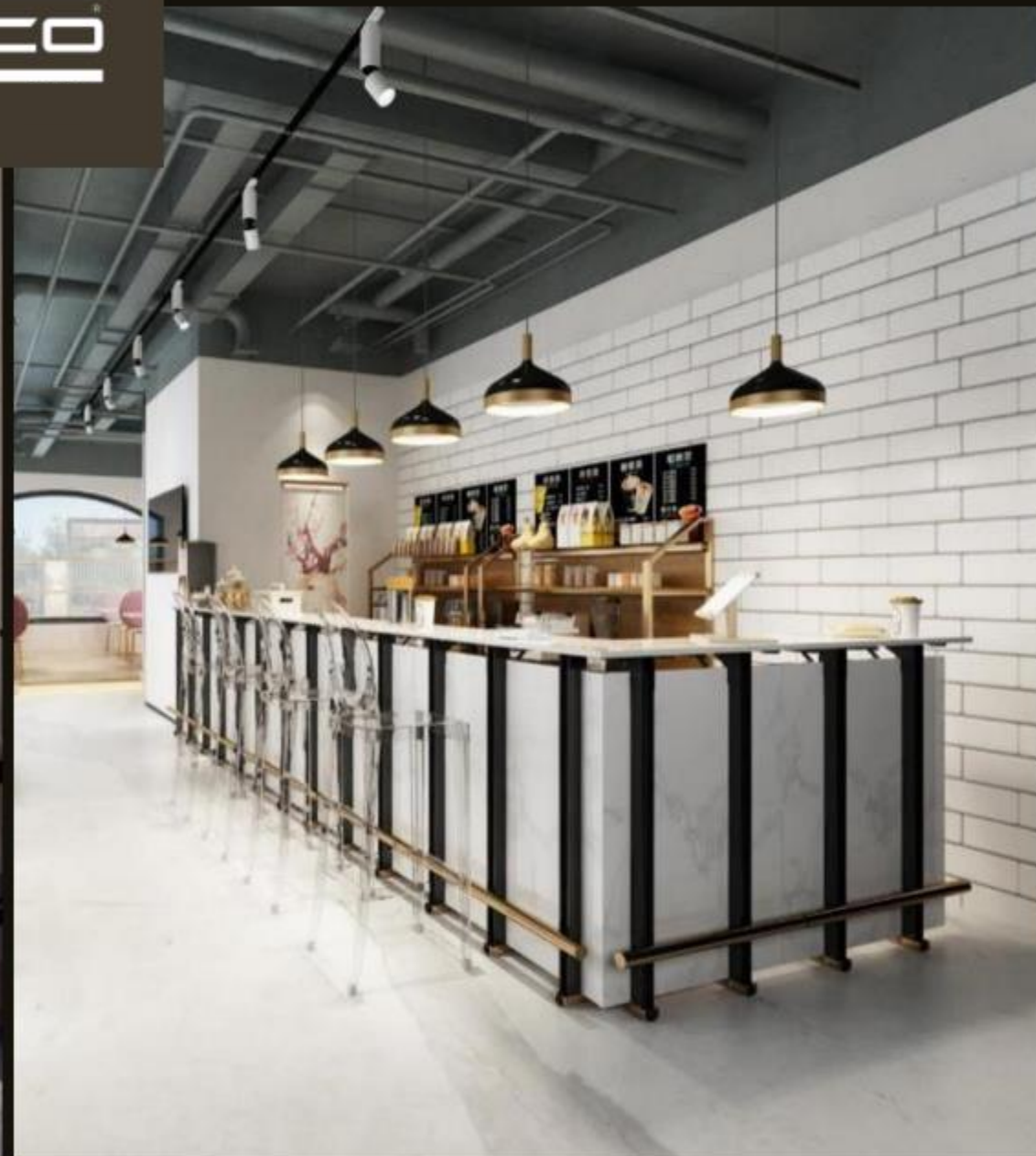




Multi-Purpose
- Bar / Reception / Sales or Info Counter







Mobile Service Bar - Combo Setup



Mobile Display Rack "A"
J24SA-XMEXX



Mobile Display Rack "B"
J24SA-XMEXX



Mobile Combo Bar Setup





WHERE INNOVATION HAS NO BOUNDARIES

Our Competitive Advantages

- < We not only design our products but also manufacture them... >
- < Local & International Sales Office covering all areas worldwide... >
 - < International Engineering Team Support >
 - < Advanced Automated Manufacturing Facilities >
 - < Complete QC System >
 - < Leader in this Field with long Experience >



Contact us



©SICO Incorporated
1800 IS - 4/19 - R1 IPG 2K

SICO Incorporated -
Global Headquarters

SICO America Inc.

Tel: 1 800 328 6138

Email: sales@sicoinc.com

SICO Japan Inc.

Tel: +81(3) 3288 0145

Email: info@sico-japan.com

SICO Asia PTE LTD

Tel: (65) 6500 0800

Email: sales@sicoasia.com

SICO Middle East DMCC

Tel: (971) 4 422 8259

Email: sales@sico-me.com

SICO Europe Limited

Tel: +44(0) 1303 234 000

Email: sales@sico-europe.com

SICO South Pacific Limited

Tel: +61(2) 4336 1333

Email: sales@sicosp.com.au

| www.sicoinc.com |