



FLEXIBILITY AT ITS BEST

Efficient - Save Storage Space - Endless Options



Multi-Flex & EVO

Specification & Product Info



* Various Modules Available



* Laminated wood tops with Push-button knob (for easy removing)

* Mobile Folding Understructure with Middle Shelf



* Power Management System (build-in)



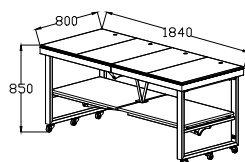
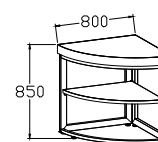
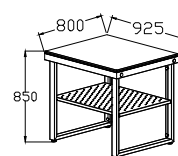
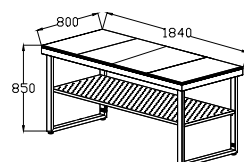
UNIQUE MODULAR SYSTEM

Removable Aluminum Frame Panel Options;

- * A vast choice of Laminate Colour & Patterns
- * Acrylic Panel – Onyx, plain or with Designer Print-on
- * Middle Front Panel; with Acrylic and LED Lighting



* Durable Deluxe Casters

SHAPES & DIMENSIONS
EVO

MULTI-FLEX

VARIOUS OPTIONS
Stainless Steel Frame Finish


Brushed

Aluminum Frame Finish

 AA01
Black

 AA02
Red

 AA03
Blue

 AA04
Silver

 AA05
Light Brown

 AA06
Dark Brown

Standard Laminate

 NL101
Black

 NL102
Grey

 NL103
Black Walnut

 NL104
Wenge Fine

 NL105
Kiailesu Walnut

 NL106
Samoa Teak

 NL107
Mountain Walnut

 NL108
Wild Cedar

 NL109
Light Oak

Deluxe Laminate (REV-LAM)

 3476H
Jet Sequoia

 8830H
Elemental Concrete

 0909
Black

 3423H
Travertine Gold

 3421G
Bianca Luna

 9302H
Fantasy Marble

 6417H
Elemental Oxide

 0909L
Black-Leather

MATCH YOUR INTERIOR DESIGN

With our removable designer panels you can easily give your own signature to the stations and make them match your function rooms. If you are looking for additional sets of theme function panels, they are also available and can be easy interchanged.

*For additional laminate options please contact our customer service.

EVO – MOBILE / FOLDING / MODULAR

Mobility and flexibility in one designated designed understructure. Besides it comes with all other outstanding features like Multi-flex;

- * A wide range of plain and functional modules
- * A vast choice of panel finishes and pattern (from simple to artistic)



Folded for Storage



Unlock & Unfold



In Operation Position



With Designer Panels

FOLDING SYSTEM

EVO
SYSTEM

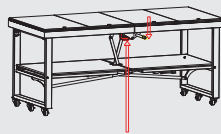


TO FOLD

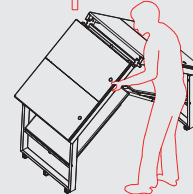


TO UNFOLD

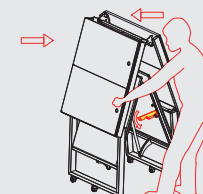
Pull the yellow bar out and press downwards.



↑ Push support bar upwards.



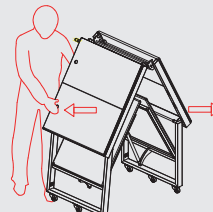
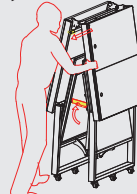
Unlock the handle and release the frame.



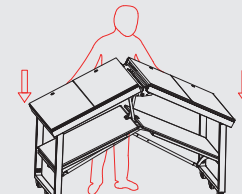
Engage locking bar.



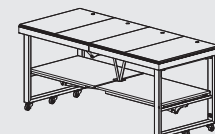
Pull out the yellow bar.



Lift the locking bar.



Use the support bar to press downwards.



MULTI-FLEX – THE ULTIMATE CONCEPT

Modular Tops with a folding leg understructure. The simple shape, high quality materials and special finishes enhance the look of this design

*** Conveniently make your own top configurations according your daily event requirements



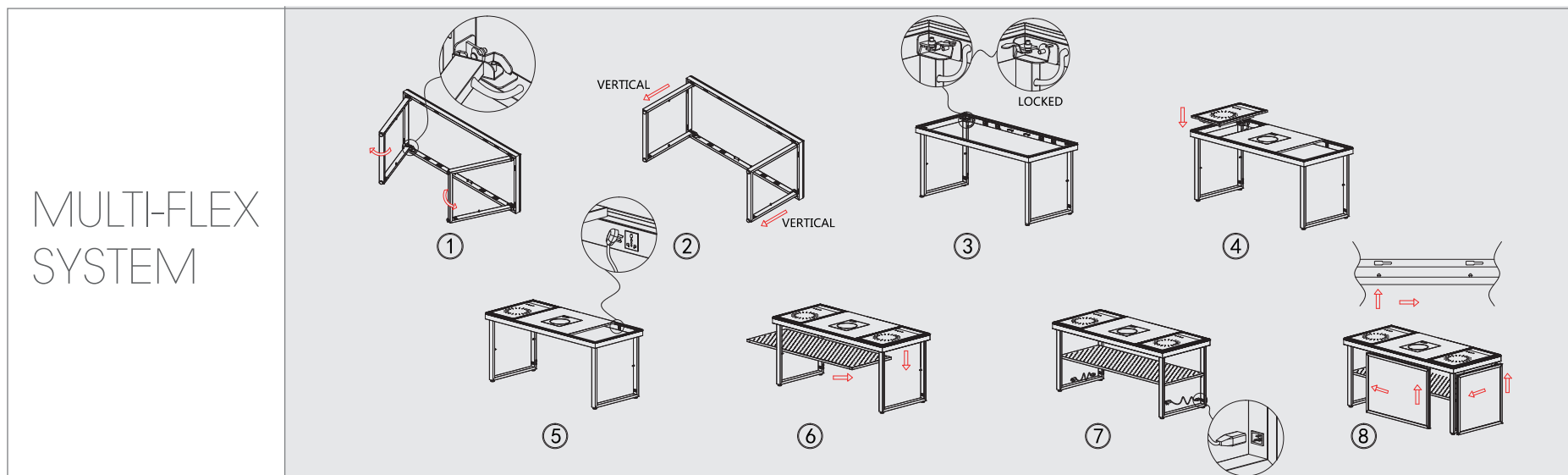
Folded for Storage

Unlock & Unfold

In Operation Position

With Designer Panels

FOLDING SYSTEM

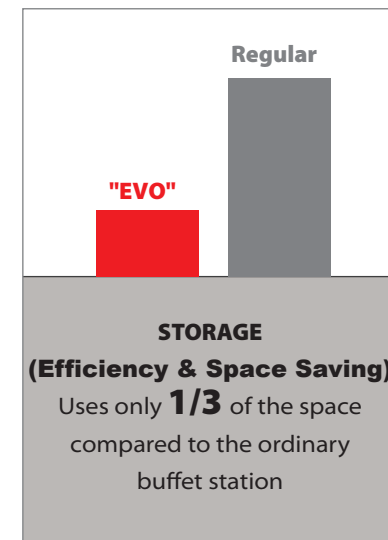
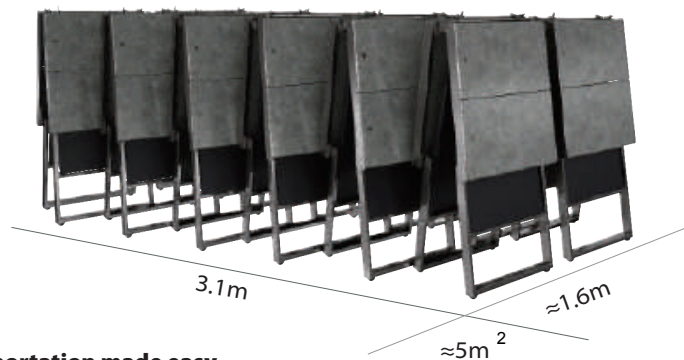


■ EVO – EASY / CONVENIENT / SPACE SAVING

One person can handle it easily; change the tops without tools, this station rolls in open and folded position on its own casters, it is easy to relocate if needed. This specially designed folding system is a great space saver for storage of the stations



Transportation made easy



■ CHANGE OF MODULES



A.) Unlock the Module



B.) Easy Lift it out



C.) Replace the Module

Endless ADD-ONS

They come in matching materials and finishing to suit the main stations; a must for the perfect buffet line, which gives you great layout possibilities.

*** Both shapes are available in 3 different heights (850 / 950 / 1050mm), which gives you elevations within the buffet line

*** They give additional working & display space, and are great additions to the action stations, as well for individual smaller cocktail setups



Corner Station
(Fixed Version)



Side Stations – ½
(Knock Down Version or Fixed Mobile)

MULTI-FLEX & EVO



Mobility; this tables can be fitted with optional casters or transported with the designated trolley

Power Management

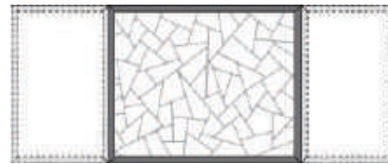


2 pcs outgoing Power Sockets
(16amps)



2 x 2 Universal Power Sockets
(build into the frame)

Front & Side Panels



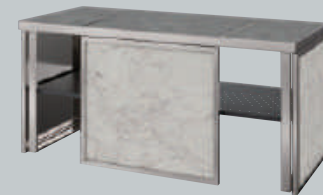
Setup "A"



Setup "B"



Setup "C"



Easy To Hang A Dazzling Color Screen

Removable front panel; aluminum frame with LED or Designer print-on option



*** Alu-Panel Installation

Simply hang them onto the frame
(no tools are needed)
LED Light starts instantly (Optional)



*** **Modules;** Waterproof and heat-resistant decorative fireproofed boards

*** **Durable Aluminum edge;**

Effectively protect the module, and seal the core to prevent dirt, oil stains and water going inside.



EASY TO CLEAN
& MAINTAIN



STAIN
RESISTANT



IMPACT
RESISTANT

Designer Panels - Endless Choices



Modules

Modules – $\frac{1}{4}$

Induction Hot Holding
Induction Cooking
Boiling Unit with four Hole Cover & Baskets
Boiling Unit with Double Soup Insert
Boiling Unit with Dim Sum Basket Holder
Boiling Unit with 1/3 GN Inserts
Steam Hot Holding
Induction Wok Cooking (MF only)

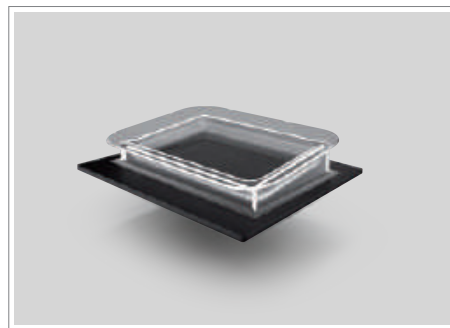
Modules – $\frac{1}{2}$

BJ Duck & Chinese BBQ
F&B Display (Ice Well)
Carving
Hot Holding
Hot Plate
Induction Wok Cooking
Flat Grill (MF only)



■ ■ COLD DISPLAY

Cold F&B Display (Ice Well)



$\frac{1}{2}$
Unit

IDEAL FOR

SEAFOOD & SALAD BAR / SUSHI &
SASHIMI / WINE & CHAMPAGNE BAR

FEATURES

- » 18mm MDF Core with both sides Laminate finish
- » Acrylic Rim & Insert
- » Drainage system with Faucet
- » LED Lighting System (Blue)

TECHNICAL SPECIFICATIONS

- » 80W
- » AC220V
- » Plug 10A/AC220V

■ ■ ACTION

BJ Duck & Chinese BBQ With removable stainless steel rack



$\frac{1}{2}$
Unit

IDEAL FOR

ROAST & BBQ MEAT PRESENTATION,
COLD CUT & HAM SERVING

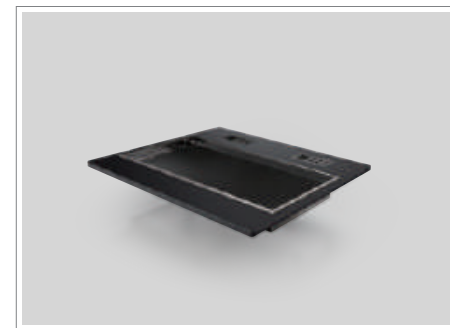
FEATURES

- » 18mm MDF Core with both sides Laminate finish
- » Stainless Steel Rack with Sneeze Guard, Hanging Bar & Spot Lighting
- » Removable Drip Tray (S/S)

TECHNICAL SPECIFICATIONS

- » 24W
- » AC220V
- » Plug 10A/AC220V

Grill Plate (Electric)



$\frac{1}{2}$
Unit

No
Humidity

Electric

IDEAL FOR

A LA MINUTE COOKING OF
PORTIONED FOOD

FEATURES

- » 18mm MDF Core with both sides Laminate finish
- » Tempered glass top (two individual cooking zones)
- » Integrated touch control panel
- » Excess liquid collector

TECHNICAL SPECIFICATIONS

- » 4000W
- » AC220V
- » Plug 2x10A/AC220V

■ ■ ACTION

Carving with Heating Lamps



1½

Unit



Electric

IDEAL FOR

**PRESENTATION & SERVING OF
ANY TYPE OF HOT CARVING OF MEAT
& SEAFOOD**

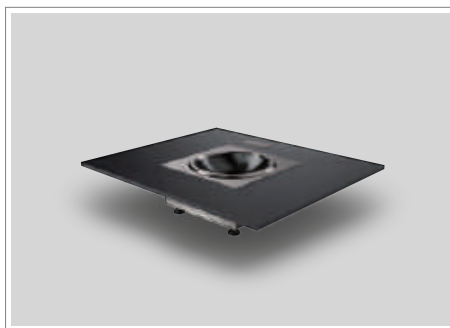
FEATURES

- » 18mm MDF Core with both sides Laminate finish
- » Stainless Steel Stand with White Plastic Cutting Board
- » Two Stainless Steel Heating Lamps
(Table Top Version)

TECHNICAL SPECIFICATIONS

- » 550W
- » AC220V
- » Plug 10A/AC220V

Wok (Induction)



¼

Unit

1½

Unit



Induction

IDEAL FOR

ASIAN STIR-FRIED DISHES

FEATURES

- » 18mm MDF Core with both sides Laminate finish
- » Drop-in Induction Wok with user-friendly
Temperature Control (Wok Pan not included)

TECHNICAL SPECIFICATIONS

- » 3500W
- » AC220V
- » Plug 16A/AC220V

Boiling with 4 Baskets



¼

Unit



Electric



High
Humidity

IDEAL FOR

PASTA, DUMPLINGS AND VEGETABLES

FEATURES

- » 18mm MDF Core with both sides Laminate finish
- » Heavy-duty Boiler Unit with user-friendly
Temperature Control
- » Uniform temperature distribution
- » Removable Stainless Steel Cover with 4 Holes
& Baskets

TECHNICAL SPECIFICATIONS

- » 3200W
- » AC220V
- » Plug 16A/AC220V

Cooking – Deluxe (Induction)



¼

Unit



Induction

IDEAL FOR

**A LA MINUTE COOKING OF
PORTIONED FOOD**

FEATURES

- » 18mm MDF Core with both sides Laminate finish
- » Build in Induction Cooking Plate (50-240°C)
with 5 level temperature control (1-5)

TECHNICAL SPECIFICATIONS

- » 1800W
- » AC220V
- » Plug 10A/AC220V

■ ■ HOT HOLDING

Hot Holding – Boiling Unit with GN1/3 Food Pans



IDEAL FOR

HOT SAUCES,
STEWES AND WET MAIN DISHES

FEATURES

- » 18mm MDF Core with both sides Laminate finish
- » GN1/1 Boiler with user-friendly Temperature Control
- » Uniform temperature distribution
- » Removable Stainless Steel GN1/3 Food Pans with Cover (3pcs)

TECHNICAL SPECIFICATIONS

- » 2000W
- » AC220V
- » Plug 10A/AC220V

Hot Holding – Boiling Unit with Soup Inserts



IDEAL FOR

SOUPS, CONGEE & LIQUID DESSERTS

FEATURES

- » 18mm MDF Core with both sides Laminate finish
- » GN1/1 Boiler with user-friendly Temperature Control
- » Uniform temperature distribution
- » Removable Stainless Steel Cover with two Soup Inserts

TECHNICAL SPECIFICATIONS

- » 2000W
- » AC220V
- » Plug 10A/AC220V

Hot Holding - Boiling Unit with Dim Sum Basket Holder



IDEAL FOR

STEAMED HOT HOLDING

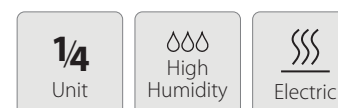
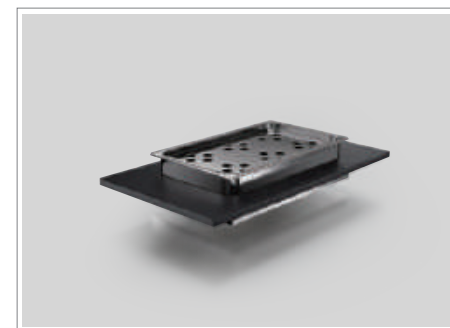
FEATURES

- » 18mm MDF Core with both sides Laminate finish
- » GN1/1 Boiler with user-friendly Temperature Control
- » Uniform temperature distribution
- » Removable Stainless Steel Tray (perforated), holds 6 towers of baskets (Dia.140mm) or can be customized

TECHNICAL SPECIFICATIONS

- » 2000W
- » AC220V
- » Plug 10A/AC220V

Steam Hot Holding with electric Bain-Marie



IDEAL FOR

HOT HOLDING OF STEAMED FOOD

FEATURES

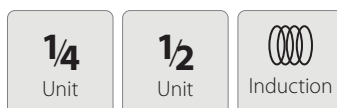
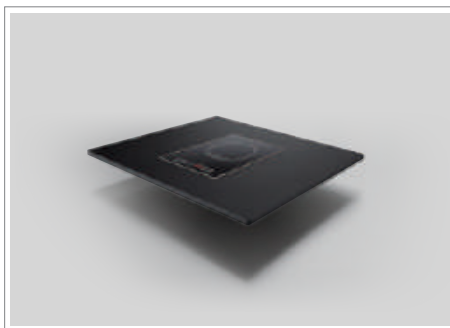
- » 18mm MDF Core with both sides Laminate finish
- » GN1/1 Water Pan with Electric Heating Plate
- » Removable Stainless Steel Tray (perforated), holds 6 towers of baskets (Dia.140mm) or can be customized

TECHNICAL SPECIFICATIONS

- » 700W
- » AC220V
- » Plug 10A/AC220V

■ ■ HOT HOLDING

Hot Holding (Induction)



IDEAL FOR

CHAFING DISH (Round or Square),
OR ANY INDUCTION FRIENDLY FOOD
PAN & CONTAINER

FEATURES

- » 18mm MDF Core with both sides Laminate finish
- » Build in Induction Holding Plate (65-90°C)
with 3 level temperature control (1-3)

TECHNICAL SPECIFICATIONS

- » 600W
- » AC220V
- » Plug 10A/AC220V

Ambient Hot Holding with Heating Lamps



IDEAL FOR

BAKED & DEEP-FRIED DISHES

FEATURES

- » 18mm MDF Core with both sides Laminate finish
- » Two Stainless Steel Heating Lamps
(Table Top Version)

TECHNICAL SPECIFICATIONS

- » 550W
- » AC220V
- » Plug 10A/AC220V

Hot Holding with Electric Plate with Heating Lamps



IDEAL FOR

BREAD & BAKERIES, PIZZA,
WARM DESSERTS, DRY SNACKS &
PLATED DISHES

FEATURES

- » 18mm MDF Core with both sides Laminate finish
- » Electric Heating Plate (470x620mm)(build-in) with
tempered Glass Top, adjustable Temperature
Control (up to 85°C)
- » Two Stainless Steel Heating Lamps
(Table Top Version)

TECHNICAL SPECIFICATIONS

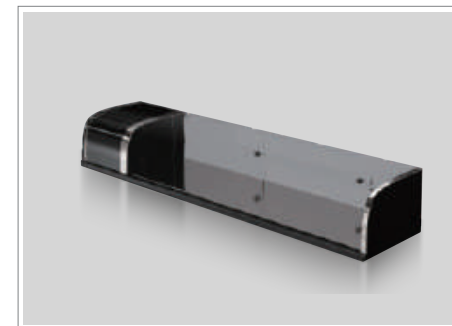
- » 1180W
- » AC220V
- » Plug 10A/AC220V

Accessories

Order our Multi-Purpose Station and create different setups with our wide range of accessories to fit your daily function requirements.

LET US KNOW ANY ADDITIONAL SETUPS YOU WOULD LIKE TO CREATE
AND WE WILL COME UP WITH A SOLUTION

Sushi Fridge



IDEAL FOR

SUSHI & SASHIMI DISPLAYS

Sneeze Guard

(Table Top Version)



IDEAL FOR

HOT HOLDING: WITH HEATING LAMPS
COLD DISPLAYS: WITH SPOT LIGHTING

Cutting Board

(Rectangular, with Drip Groove)

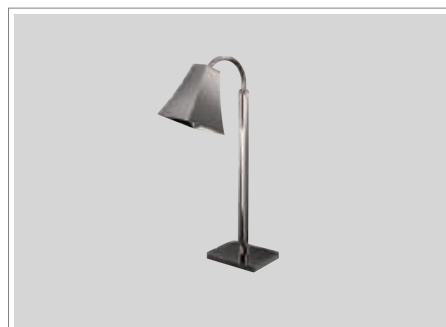


IDEAL FOR

ROAST & BBQ MEAT PRESENTATION
COLD CUT & HAM SERVING

Buffet Lamp

(Table Top Version)



IDEAL FOR

HOT HOLDING: WITH HEATING LAMPS
COLD DISPLAYS: WITH SPOT LIGHTING

Splash Guard

(Table Top Version)



IDEAL FOR

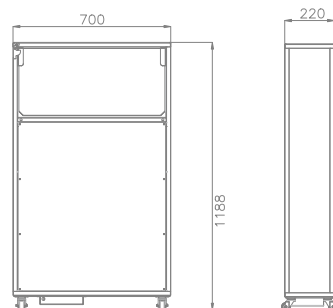
SHIELDING YOUR CUSTOMERS
FROM POSSIBLE SPLASHES DURING
SHOW COOKING

Exhaust System - Mobile / Free Standing

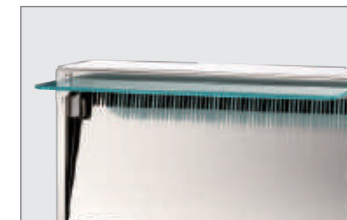


Laminated Panel with
Aluminum Frame (Match your
Buffet Station Design)

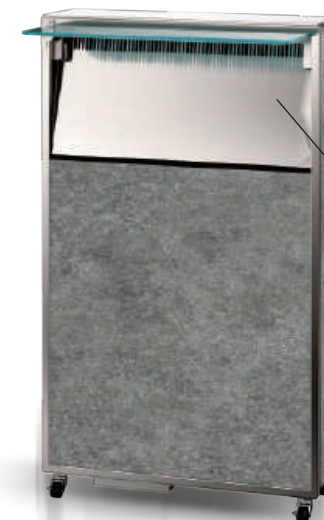
Exhaust System
(In Front of Station)



Extension Glass Panel
(folds down for storage)



Stainless Steel (Brushed) Front
Part for easy cleaning

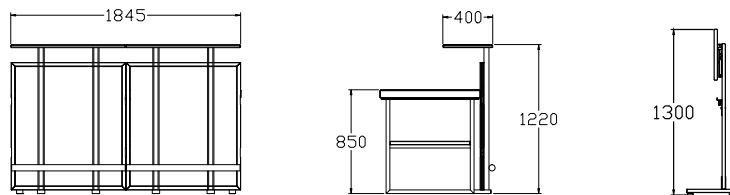


Rolls on its own casters
– easy to put in and out of action

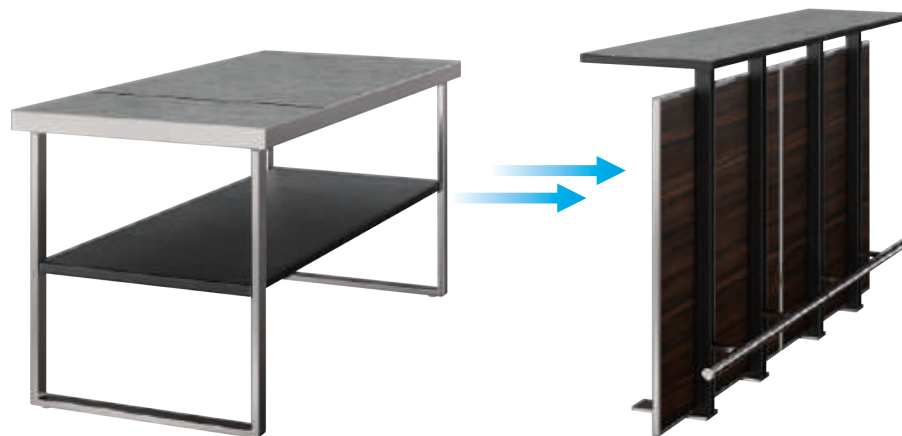
Exhaust System
(Front View)

Multi-Purpose - Bar

High quality laminated panels with our armor edge protection, the top folds for easy storage. Choose from many different colours & patterns.



Bar or Reception Table



**Multi-Purpose
Station**

**Bar/Reception
Module**

- Laminate board protected by SICO Armor edge
- Steel tube with powder coat finish
- Stainless steel decoration tube

BAR STATION - COMBO



Full Service Bar

- * 1 pc Main Station
- * 1 pc Long Riser
- * 2 pcs Side Stations
- * 3 pcs Back Bars



**Multi-Purpose Station
with Riser**



Side Station
(F&B Display)



Veritcal Display Cabinet

CREATE YOUR OWN...

Depending on your event's requirement, you can choose from a simple front bar to a complete setup with relevant back bar cabinets and side stations

With matching panel color and pattern, the bar becomes part of the whole buffet concept...

COFFEE / DELI SHOP

With the matching materials & colour scheme, this setup becomes part of your F&B Function Concept – We can also make custom made setups.



Example of a Coffee Counter Setup



Display Rack Stand
(Table Top Version)

TURN YOUR MULTI-PURPOSE STATION INTO A DELI COUNTER

Suitable for both the EVO and Multi-Flex Design, by adding the designated display rack and panels, you can customize your own setups; From a coffee station, Bakery Display or Seasonal Displays and so on...

STORAGE TROLLEY FOR "EVO"

Panel Trolley

If you are ordering a lot of Front & Side Panels, then this trolley is a great addition to the Combo EVO trolley



OCA1B - 001

Upper Section

Slanted rails allow easy loading and unloading of modules



Middle Section

Designed to have maximum storage for front and side panels

Lower Section

For storage of various accessories, the folding front panel gives easy access to all the products



OCB2B

Specially designed to hold modules (1/4 & 1/2), middle front & side front panels and side panels, as well as accessories

Storage Cover

Optional you can purchase the designated dust covers for any of our "EVO & Multi-Flex" trolleys; Protect the stations from dust & dirt, make your storage look neat & tidy.

* They are very easy to use because of the Velcro open /closing system.

* Choose from Oxford fabric or canvas, both materials are durable and easy to clean.

TRANSPORTATION & STORAGE TROLLEYS

“Multi-Flex”

Trolley for Front & Side Panels

- Holds up to 8 sets of Front and Side panels.
- Easy to load and unload.



OCA1B

“Multi-Flex”

Trolley for Understructure & Accessories

- Holds up to 4 complete sets of understructure and middle shelf.
- The specially designed top compartment can hold the heating lamps or additional accessories



OCC1B

Specially designed to hold the "Multi-Flex" modular buffet system; designated trolleys to hold the understructure middle shelf / all modules / the front and side panels.



OCB1B

“Multi-Flex”

Trolley for Modules

- Holds up to 4 complete set of modules (1/4 or 1/2 units).
- The yellow horizontal rails can be moved to adjust the spacing; so as they can hold different module heights.