



# 24/7 Sofa Wallbed System



## Features

This versatile wallbed/couch system is a great choice for properties where space is at a premium and you must accommodate multiple functions within a limited footprint. This allows the property to sell a space for a meeting room by day and a sleeping room by night. With the Eurobed® you can customize the bed, mattress sizes, cabinetry options and laminate choices that best meet your needs.



① Recessed in Down Position

② Padded Headboard

③ Compression Mechanism

④ Micro-Adjustable Mechanism

⑤ European Slat System

⑥ Folding Leg Support

⑦ Aluminum Frame

## Build It Your Way

Choose to customize the finishes, cabinetry, wall position and more. Our wallbeds are designed to be customized to fit your exacting needs. Choose finishes that complement or blend with your existing decor for a seamless look.

Our cabinetry is handmade in the USA and built for commercial use. Choose from the popular veneer, shaker, raised panel or molding or choose to have something unique to your space.



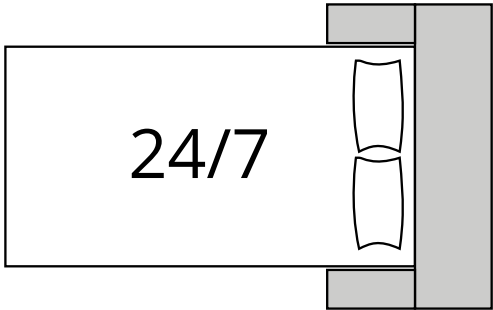
# Mattress and European Slats

Choose from standard sizes and multiple mattress types to perfectly suit your sleeping needs. Design can accommodate standard bed sizes including Twin, Twin XL, Double, Double XL and Queen. The SICO® mattress offers the sleeping comfort of a conventional bed. Bedding is custom made to SICO's exacting specifications. The European Slat System is lightweight, space saving and durable. This system completely replaces the traditional box spring without loss of comfort and adjusts to the contours of the body.



# Vertical Fold or Side Fold

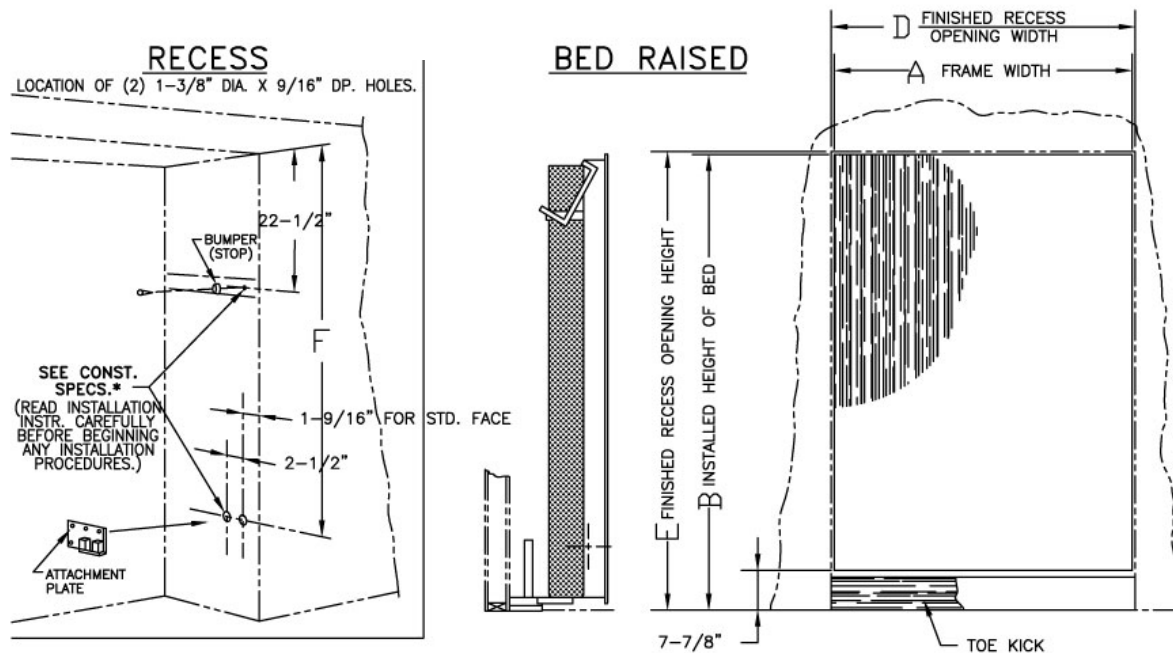
The 24/7 Sofa is a vertical fold wallbed with a couch when closed. This creates a functional seating arrangement when the bed is not in use. Meeting room by day, sleeping room by night. Using 24/7 wallbeds will give you the versatility to rent a space that will accommodate a variety of functions.



	Box Spring Mattress	Auto Pillow Storage	European Slatting	Compacted Footprint
Room Maker	●	●		
Eurobed			●	●

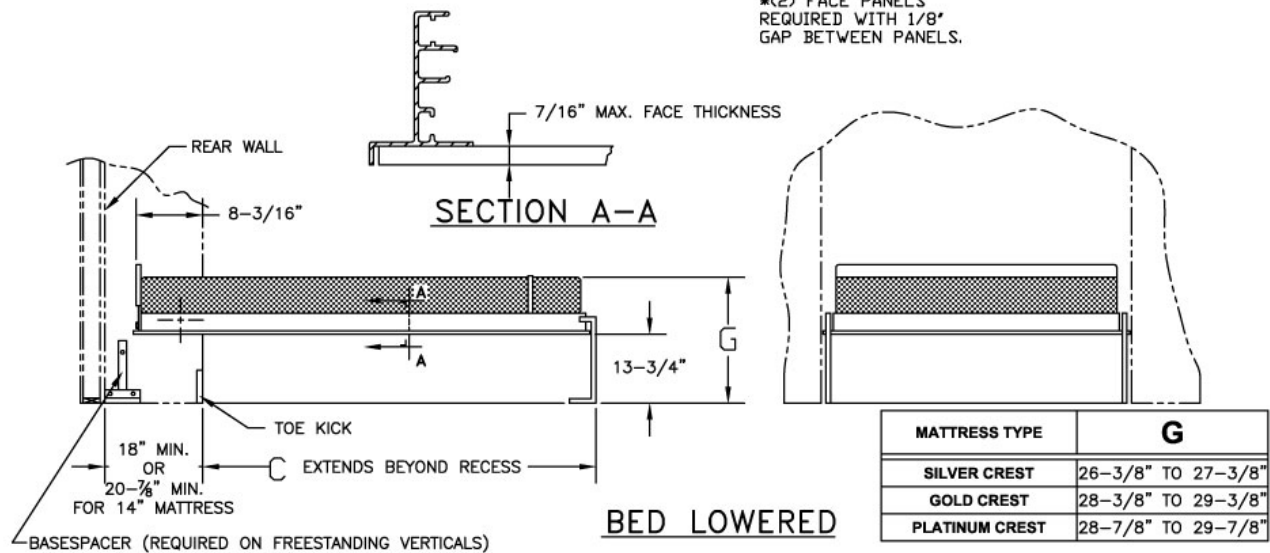


# Specifications - 24/7



BED SIZE	A	B	C	D	E	F	BED FACE SIZES	
							WIDTH	HEIGHT
DOUBLE	55-1/2"	84-7/8"	68-3/8"	56"	86-3/16"	68-13/16"	55-1/4"	76-3/4"
DOUBLE XL	55-1/2"	89-7/8"	73-5/16"	56"	91-3/16"	73-13/16"	55-1/4"	81-3/4"
QUEEN	62"	89-7/8"	73-5/16"	62-1/2"	91-3/16"	73-13/16"	30-13/16"	81-3/4"

\*(2) FACE PANELS  
REQUIRED WITH 1/8"  
GAP BETWEEN PANELS.



MATTRESS TYPE	G
SILVER CREST	26-3/8" TO 27-3/8"
GOLD CREST	28-3/8" TO 29-3/8"
PLATINUM CREST	28-7/8" TO 29-7/8"

## MATERIAL SPECIFICATIONS:

FRAME : .83 ALUMINUM EXTRUSION  
LEG : 3/4" X 18 GAUGE C.R.E.W. STEEL TUBING  
FLOORPLATE : 3/4" PAINTED PLYWOOD

## CONSTRUCTION SPECIFICATIONS:

THE BED IS AVAILABLE IN THE 3 SIZES CHARTED IN THE MIDDLE OF THIS DRAWING. CEILING HEIGHT MUST BE A MINIMUM 100" FOR DOUBLE XL AND QUEEN SIZES AND 95" MINIMUM FOR DOUBLE SIZE.

THE BOTTOM OF THE BED FRAME PROVIDES THE WALL CLOSURE. BED IS SHIPPED WITH NO FACE, 3/8" FINISHED LAMINATE FACE IN CHOICE OF COLORS, OR WITH 3/8" PAINT-READY FACE PANEL.

RECESS MUST BE CONSTRUCTED BEFORE BED IS INSTALLED. SHEETROCK CONSTRUCTION IS NOT ALLOWABLE ALONGSIDE BED FOR SUPPORT. BED MOUNTS INTO A STEEL ATTACHMENT PLATE WHICH IS SECURED TO EACH SIDE OF RECESS. A MINIMUM OF 3/4" PLYWOOD IS REQUIRED FOR ATTACHMENT OF PLATES AND BUMPERS.

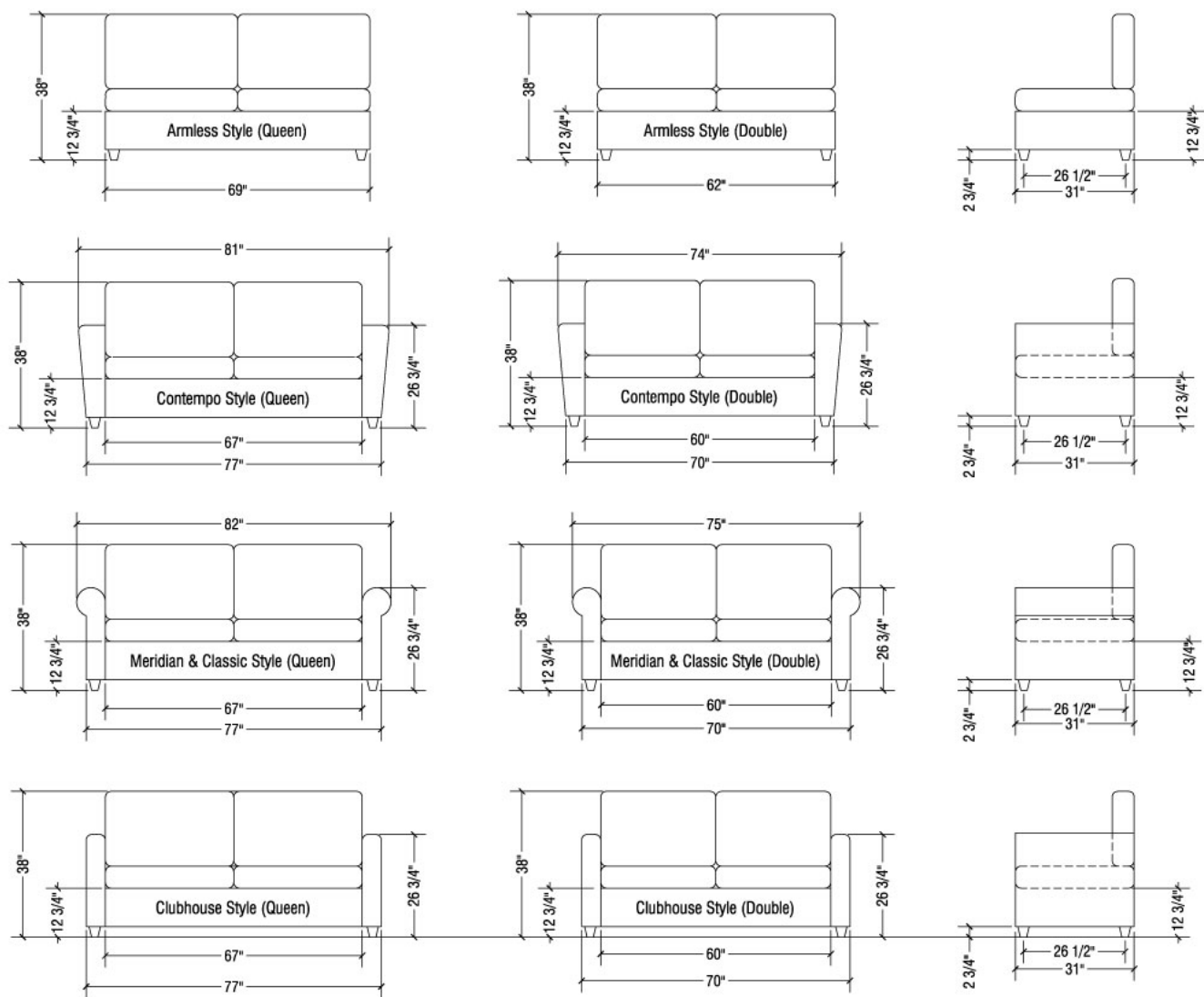
TWO PULL HANDLES ARE PROVIDED WITH EACH BED FOR CUSTOMER TO INSTALL, OR THEY MAY USE THEIR OWN HANDLE DESIGN. (2) PILOT HOLES ARE DRILLED ALONG EACH SIDE OF THE FRAME ON 3" CENTERS FOR ATTACHING HANDLES.

ADJUSTMENT BOLTS ALLOW ALIGNMENT IN THE RECESS OPENING AND COMPENSATE FOR THE WEIGHT AND DIFFERENCES IN BED FACES. BED IS SHIPPED IN ONE CARTON.

\* Frame dimensions only. Cabinetry dimensions not included.



# Specifications - Sofa





**SICO Incorporated -**

Global Headquarters

**SICO America Inc.**

Tel: 1 (800) 328 6138

Email: [sales@sicoinc.com](mailto:sales@sicoinc.com)

**SICO Asia PTE LTD**

Tel: (65) 6500 0800

Email: [sales@sicoasia.com](mailto:sales@sicoasia.com)

**SICO Europe Limited**

Tel: +44(0) 1303 234 000

Email: [sales@sico-europe.com](mailto:sales@sico-europe.com)

**SICO Japan Inc.**

Tel: +81(3) 3288 0145

Email: [info@sico-japan.com](mailto:info@sico-japan.com)

**SICO Middle East DMCC**

Tel: (971) 4 880 9388

Email: [sales@sico-me.com](mailto:sales@sico-me.com)

**SICO South Pacific Limited**

Tel: +61(2) 4336 1333

Email: [sales@sicosp.com.au](mailto:sales@sicosp.com.au)

[sicoinc.com](http://sicoinc.com) 