



Eurobed[®] Wallbed System



Features

This versatile wallbed/couch system is a great choice for properties where space is at a premium and you must accommodate multiple functions within a limited footprint. This allows the property to sell a space for a meeting room by day and a sleeping room by night. With the Eurobed® you can customize the bed, mattress sizes, cabinetry options and laminate choices that best meet your needs.



① Recessed in Down Position

② Padded Headboard

③ Compression Mechanism

④ Micro-Adjustable Mechanism

⑤ European Slat System

⑥ Folding Leg Support

⑦ Aluminum Frame

Build It Your Way

Choose to customize the finishes, cabinetry, wall position and more. Our wallbeds are designed to be customized to fit your exacting needs. Choose finishes that complement or blend with your existing decor for a seamless look.

Our cabinetry is handmade in the USA and built for commercial use. Choose from the popular veneer, shaker, raised panel or molding or choose to have something unique to your space.



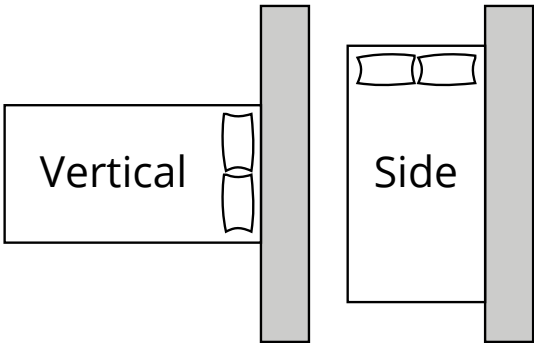
Mattress and European Slats

Choose from standard sizes and multiple mattress types to perfectly suit your sleeping needs. Design can accommodate standard bed sizes including Twin, Twin XL, Double, Double XL and Queen. The SICO® mattress offers the sleeping comfort of a conventional bed. Bedding is custom made to SICO's exacting specifications. The European Slat System is lightweight, space saving and durable. This system completely replaces the traditional box spring without loss of comfort and adjusts to the contours of the body.



Vertical Fold or Side Fold

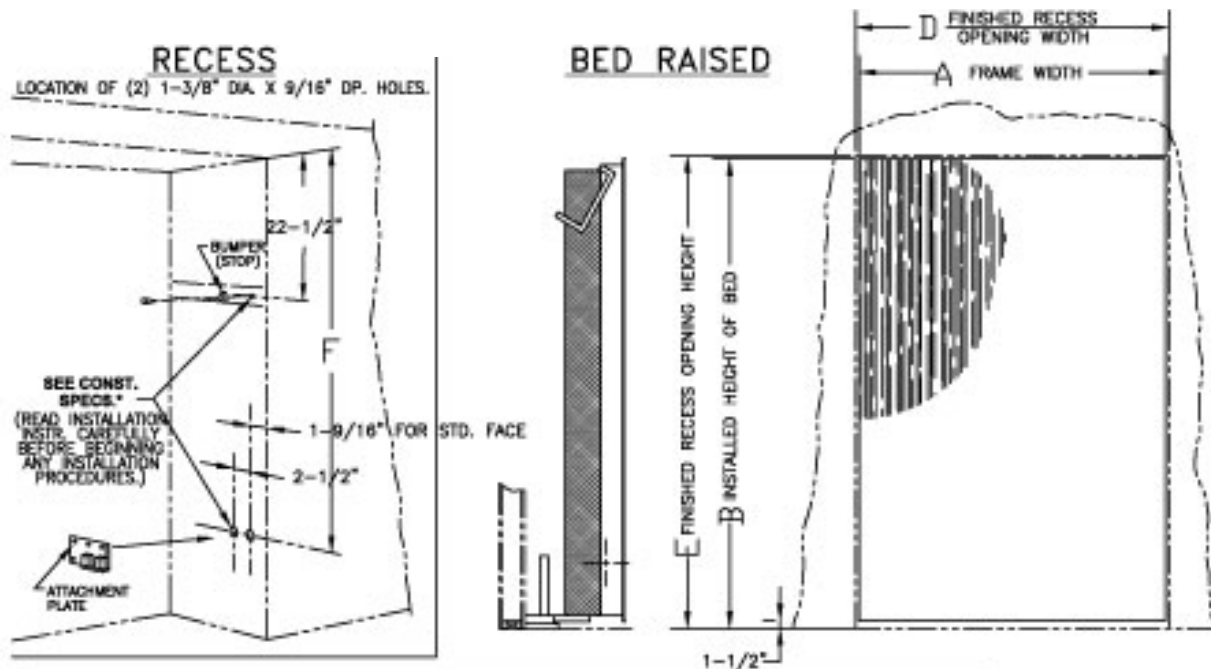
The side fold is best for low ceilings or tight vertical space. Choose vertical fold for a more conventional setup and to save horizontal floor space.



	Box Spring Mattress	Auto Pillow Storage	European Slatting	Compacted Footprint
Room Maker	●	●		
Eurobed			●	●

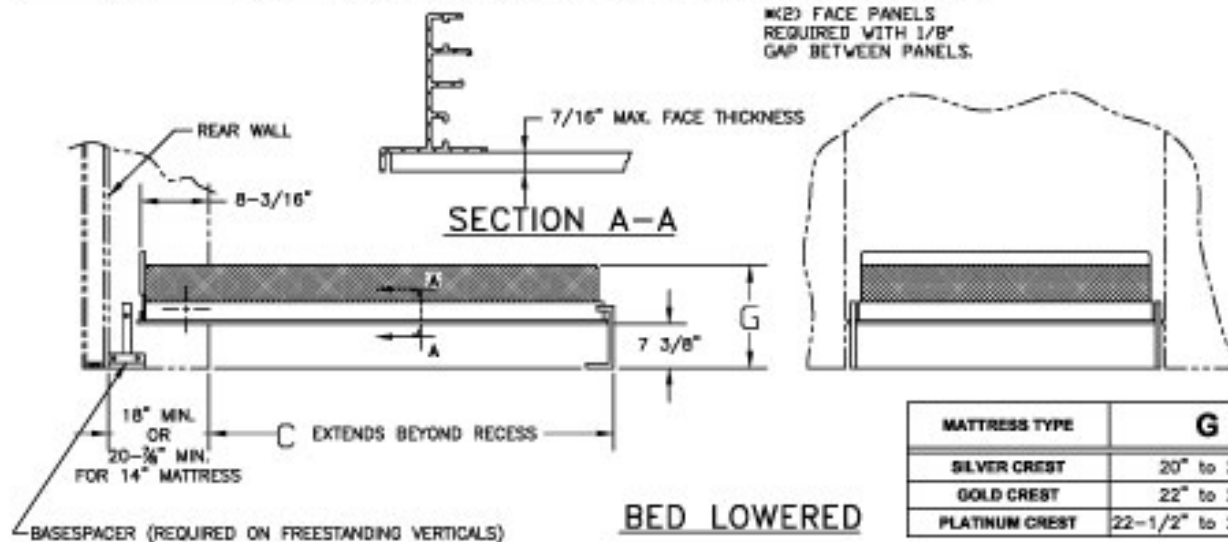


Specifications - Vertical Fold



BED SIZE	A	B	C	D	E	F	BED FACE SIZES	
							WIDTH	HEIGHT
TWIN	40-1/2"	78-1/2"	68-3/8"	41"	78-7/8"	67-7/8"	40-1/4"	76-3/4"
TWIN XL	40-1/2"	83-1/2"	73-5/16"	41"	83-7/8"	72-7/8"	40-1/4"	81-3/4"
DOUBLE	55-1/2"	78-1/2"	68-3/8"	56"	78-7/8"	67-7/8"	55-1/4"	78-3/4"
DOUBLE XL	55-1/2"	83-1/2"	73-5/16"	56"	83-7/8"	72-7/8"	55-1/4"	81-3/4"
QUEEN	62"	83-1/2"	73-5/16"	62-1/2"	83-7/8"	72-7/8"	30-13/16"	81-3/4"

* (2) FACE PANELS
REQUIRED WITH 1/8"
GAP BETWEEN PANELS.



MATTRESS TYPE	G
SILVER CREST	20" to 21"
GOLD CREST	22" to 23"
PLATINUM CREST	22-1/2" to 23-1/2"

MATERIAL SPECIFICATIONS:

FRAME : .83 ALUMINUM EXTRUSION
LEG : 3/4" X 18 GAUGE C.R.E.W. STEEL TUBING
FLOORPLATE : 3/4" PAINTED PLYWOOD

CONSTRUCTION SPECIFICATIONS:

THE BED IS AVAILABLE IN THE 5 SIZES CHARTED IN THE MIDDLE OF THIS DRAWING.

THE BOTTOM OF THE BED FRAME PROVIDES THE WALL CLOSURE. BED IS SHIPPED WITH NO FACE, 3/8" FINISHED LAMINATE FACE IN CHOICE OF COLORS, OR WITH 3/8" PAINT-READY FACE PANEL.

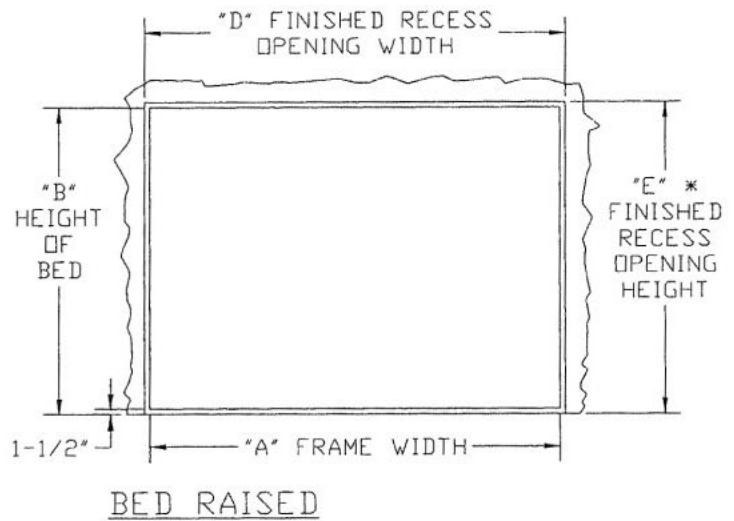
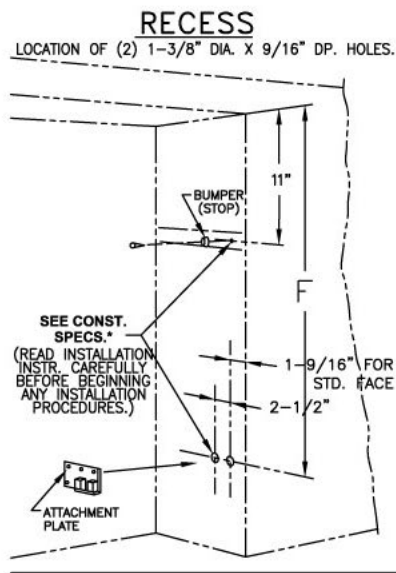
RECESS MUST BE CONSTRUCTED BEFORE BED IS INSTALLED. SHEETROCK CONSTRUCTION IS NOT ALLOWABLE ALONGSIDE BED FOR SUPPORT. BED MOUNTS INTO A STEEL ATTACHMENT PLATE WHICH IS SECURED TO EACH SIDE OF RECESS. A MINIMUM OF 3/4" PLYWOOD IS REQUIRED FOR ATTACHMENT OF PLATES AND BUMPERS.

TWO PULL HANDLES ARE PROVIDED WITH EACH BED FOR CUSTOMER TO INSTALL, OR THEY MAY USE THEIR OWN HANDLE DESIGN. (2) PILOT HOLES ARE DRILLED ALONG EACH SIDE OF THE FRAME ON 3" CENTERS FOR ATTACHING HANDLES.

ADJUSTMENT BOLTS ALLOW ALIGNMENT IN THE RECESS OPENING AND COMPENSATE FOR THE WEIGHT AND DIFFERENCES IN BED FACES. BED IS SHIPPED IN ONE CARTON.

* Frame dimensions only. Cabinetry dimensions not included.

Specifications - Side Fold



BED SIZE	A	B	C	D	E*	F	BED FACE SIZES	
							WIDTH	HEIGHT
DOUBLE	77	57	48 7/8	77 1/2	58 7/8	47 7/8	76 3/4	55 1/4
QUEEN	82	63 1/2	53 3/8	82 1/2	65 3/8	54 3/8	81 3/4	30 13/16 **

MATTRESS TYPE	"G"	"H"
SILVER CREST	20" to 21"	18"
GOLD CREST	22" to 23"	18"
PLATINUM CREST	22 1/2 to 23 1/2	18"

* THIS DIMENSION PROVIDES 1 7/8" GAP BETWEEN TOP RAIL AND RECESS OPENING. THIS IS DONE TO AVOID FINGER PINCHING.

** TWO (2) FACE PANELS ARE REQUIRED WITH A 1/8" GAP BETWEEN THE PANELS.

MATERIAL SPECIFICATIONS:

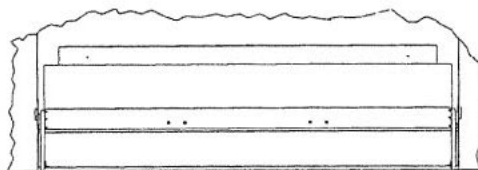
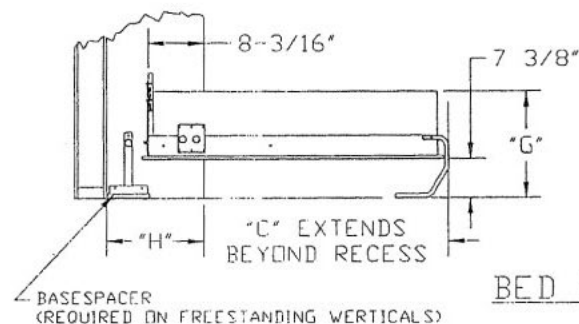
FRAME : .83 ALUMINUM EXTRUSION
LEG : 3/4" X 18 GAUGE C.R.E.W. STEEL TUBING
FLOORPLATE: 3/4" PAINTED PLYWOOD

CONSTRUCTION SPECIFICATIONS:

- ⚠ THE BED IS AVAILABLE IN TWO (2) SIZES CHARTED IN THE MIDDLE OF THIS DRAWING.
THE BOTTOM OF THE BED FRAME PROVIDES THE WALL CLOSURE.
THE BED IS SHIPPED WITH NO FACE PANEL INSTALLED, OR WITH A 7/16" FINISHED LAMINATE FACE PANEL, IN CHOICE OF COLORS, OR A 3/8" PAINT-READY FACE PANEL INSTALLED.

RECESS MUST BE CONSTRUCTED BEFORE BED IS INSTALLED. SHEETROCK CONSTRUCTION IS NOT ALLOWABLE ALONGSIDE BED FOR SUPPORT. BED MOUNTS INTO STEEL ATTACHMENT PLATES WHICH ARE SECURED TO EACH SIDE OF RECESS. A MINIMUM OF 3/4" PLYWOOD IS REQUIRED FOR ATTACHMENT OF PLATES AND BUMPERS.
TWO PULL HANDLES ARE PROVIDED WITH EACH BED FOR CUSTOMER TO INSTALL, OR THEY MAY USE THEIR OWN HANDLE DESIGN. TWO PILOT HOLES ARE DRILLED ALONG EACH SIDE OF THE FRAME ON 3" CENTERS FOR ATTACHING HANDLES.

ADJUSTMENT BOLTS ALLOW ALIGNMENT IN THE RECESS OPENING AND COMPENSATE FOR THE WEIGHT AND DIFFERENCES IN BED FACES.
BED IS SHIPPED IN ONE CARTON.



* Frame dimensions only. Cabinetry dimensions not included.



SICO Incorporated -

Global Headquarters

SICO America Inc.

Tel: 1 (800) 328 6138

Email: sales@sicoinc.com

SICO Asia PTE LTD

Tel: (65) 6500 0800

Email: sales@sicoasia.com

SICO Europe Limited

Tel: +44(0) 1303 234 000

Email: sales@sico-europe.com

SICO Japan Inc.

Tel: +81(3) 3288 0145

Email: info@sico-japan.com

SICO Middle East DMCC

Tel: (971) 4 880 9388

Email: sales@sico-me.com

SICO South Pacific Limited

Tel: +61(2) 4336 1333

Email: sales@sicosp.com.au

sicoinc.com 